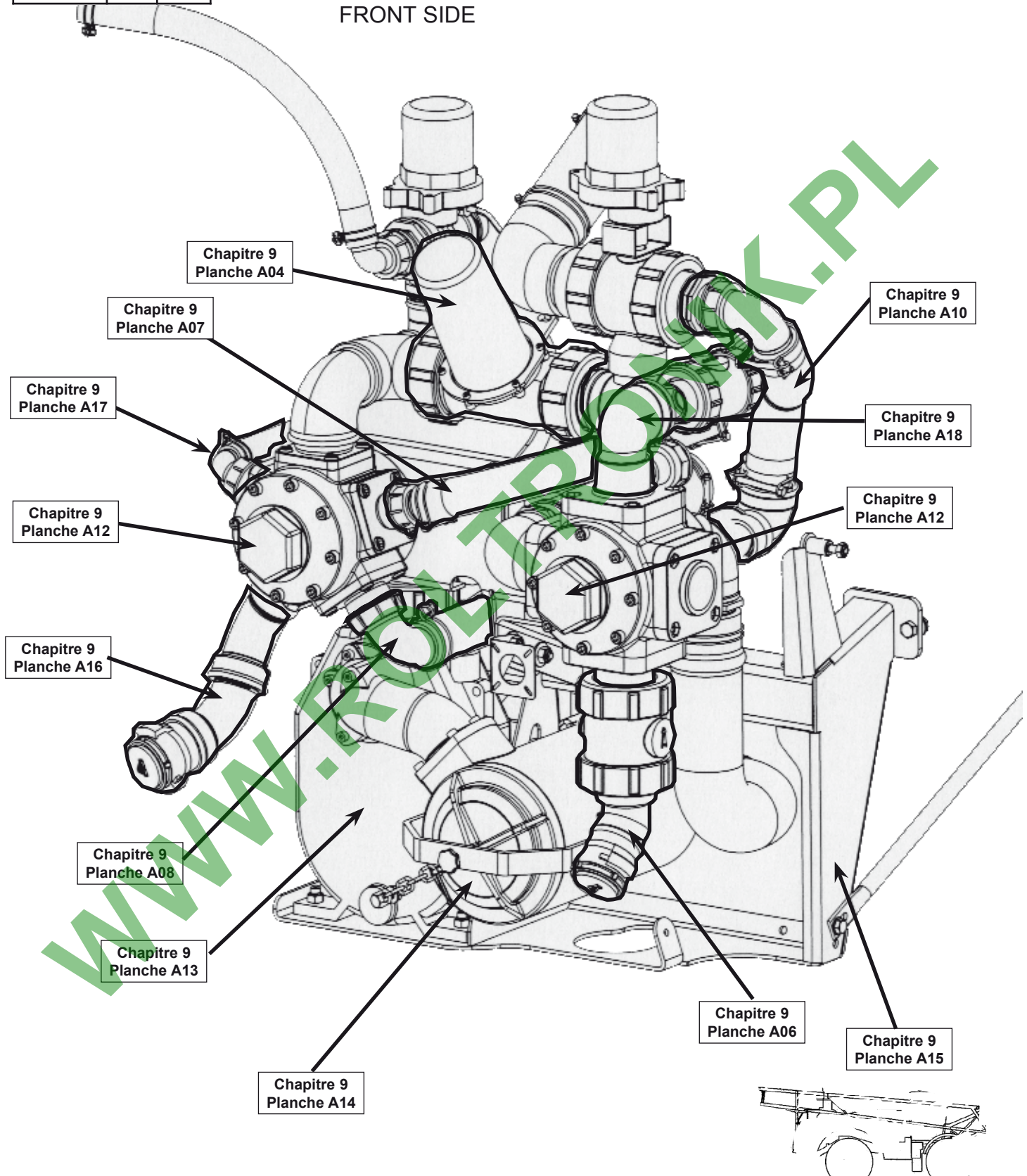


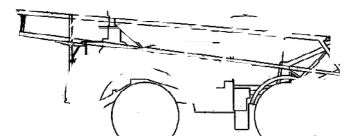
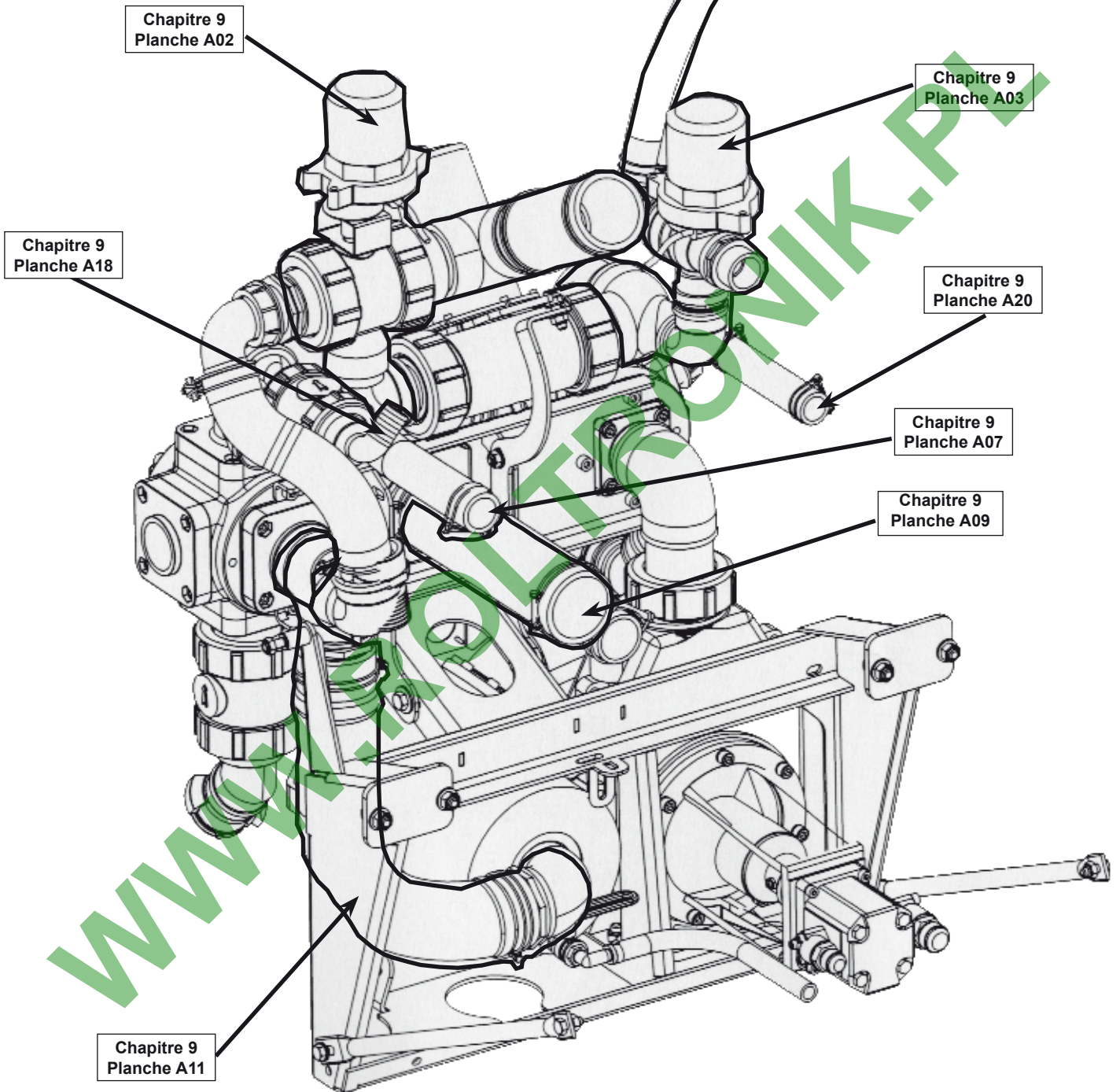
Km/h	25	40
17/39	X	X
21/39	X	X
23/45	X	

FACE AVANT  
FRONT SIDE



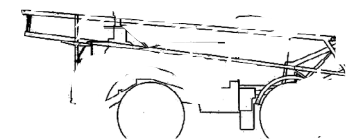
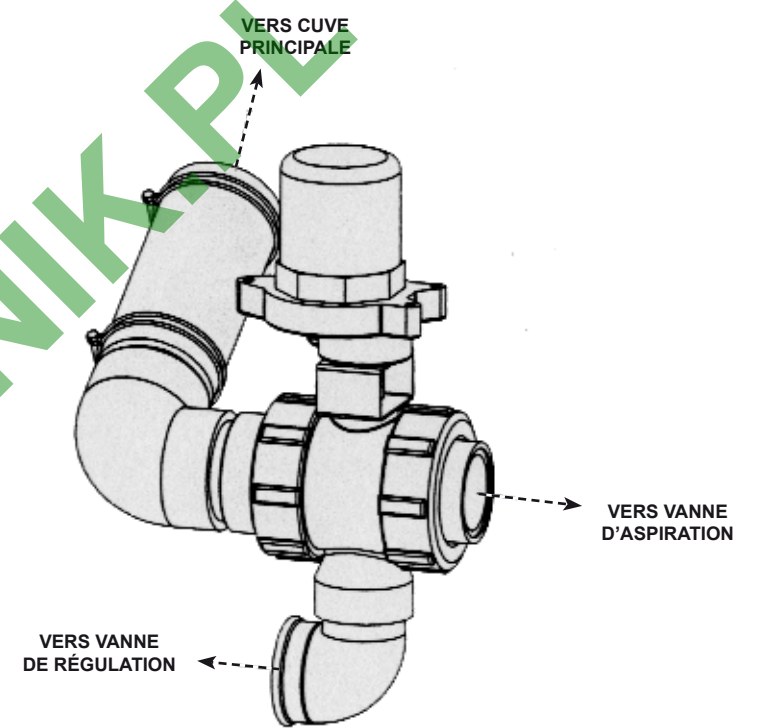
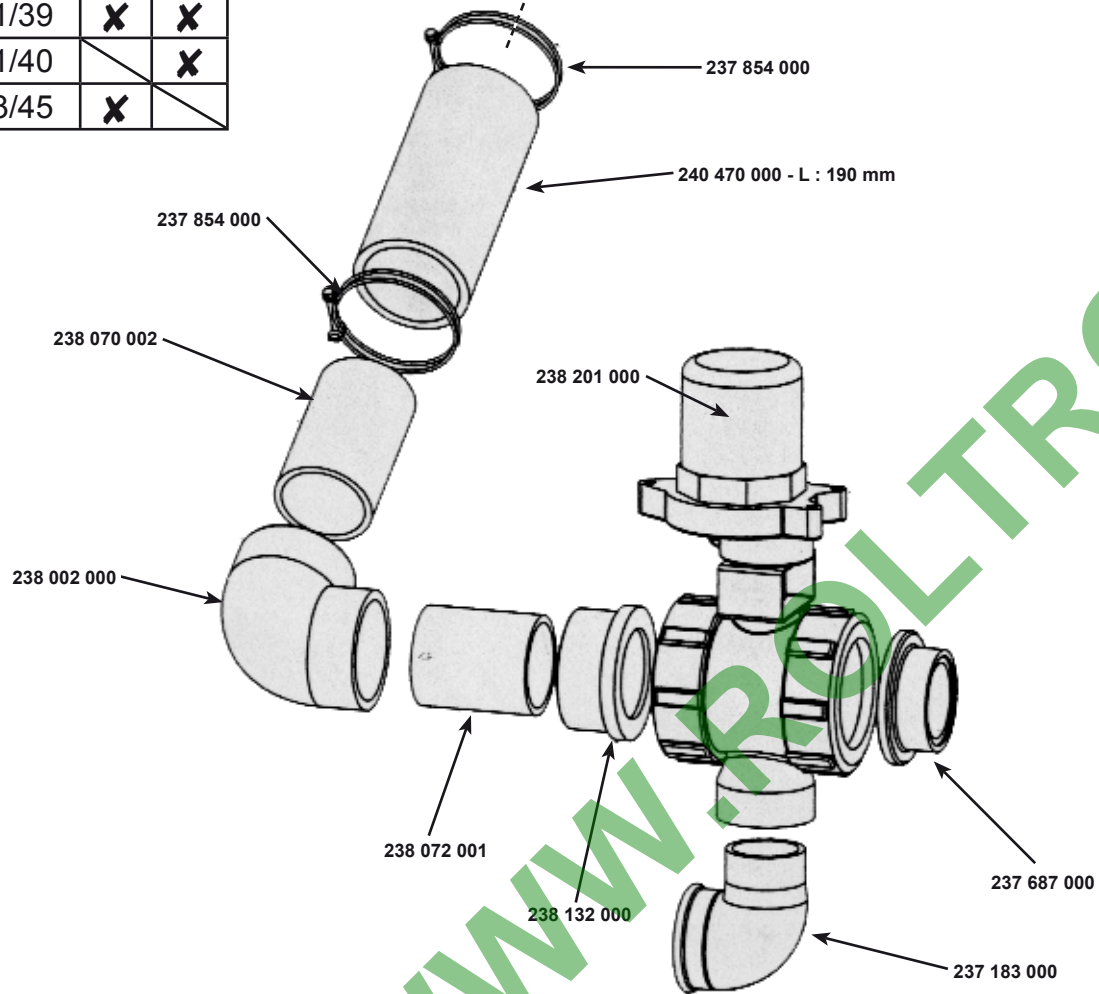
Km/h Modèles	25	40
17/39	X	X
21/39	X	X
23/45	X	

FACE ARRIÈRE  
REAR SIDE



Modèles \ Km/h	25	40
17/39	X	X
17/40		X
21/39	X	X
21/40		X
23/45	X	

Chapitre 9  
Planche A19  
Rep E



**CATALOGUE MAESTRIA  
RAMPE AV 2004**

Correctif mars 2009/March 2009 correction

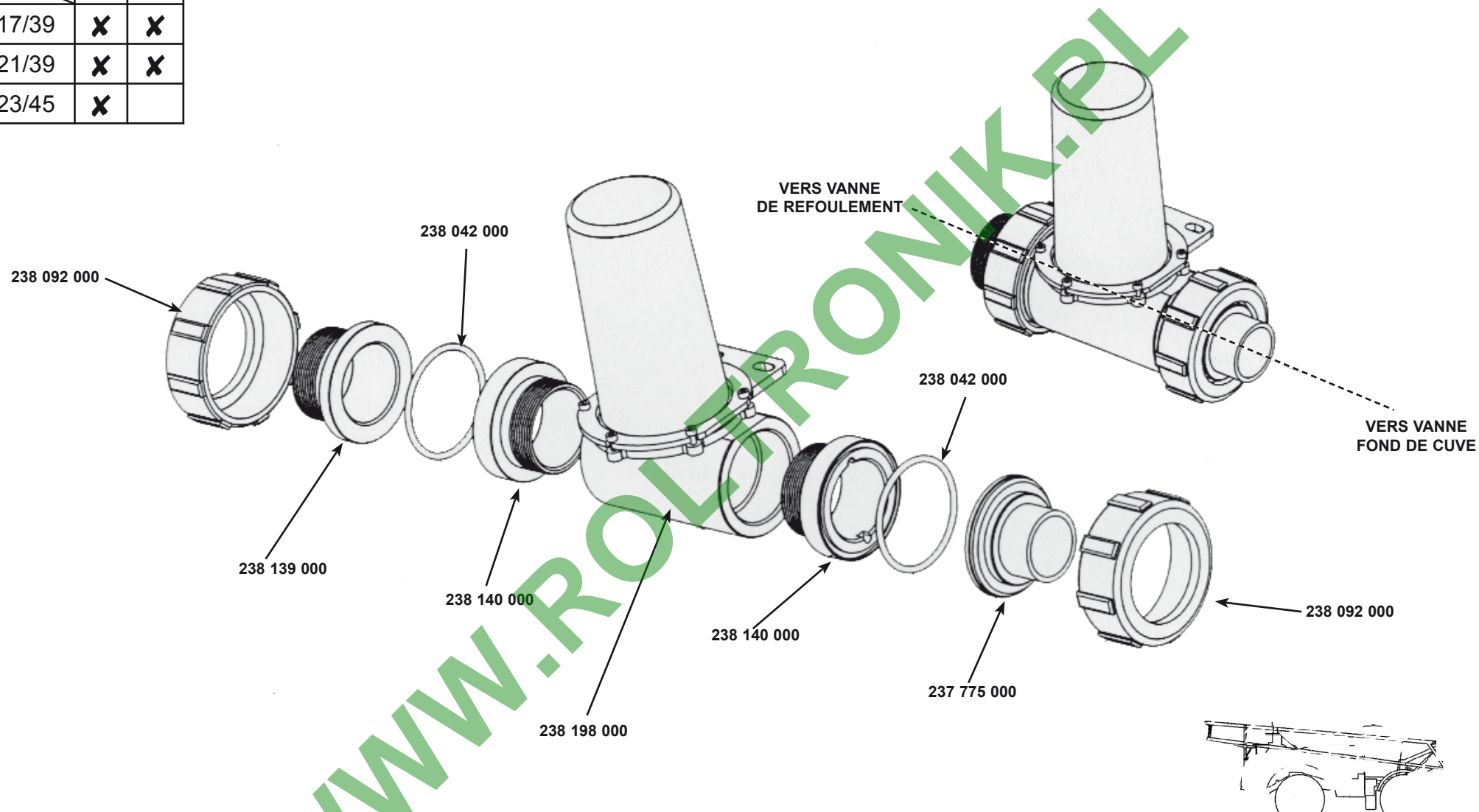
RETOUR VERS BRASSAGE  
RETURN TO MIXING



9  
A02  
02/06/05

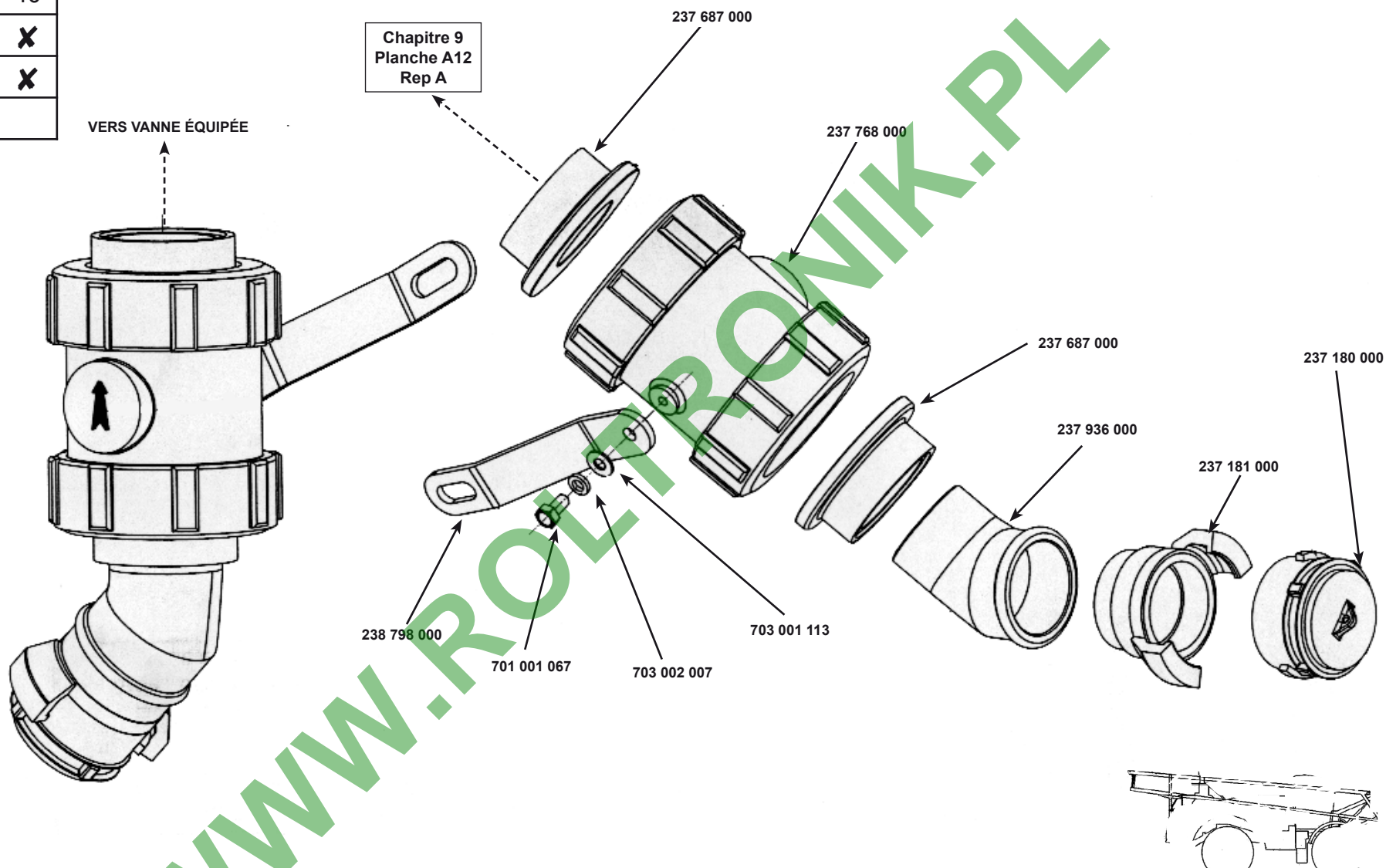


Km/h Modèles	25	40
17/39	X	X
21/39	X	X
23/45	X	

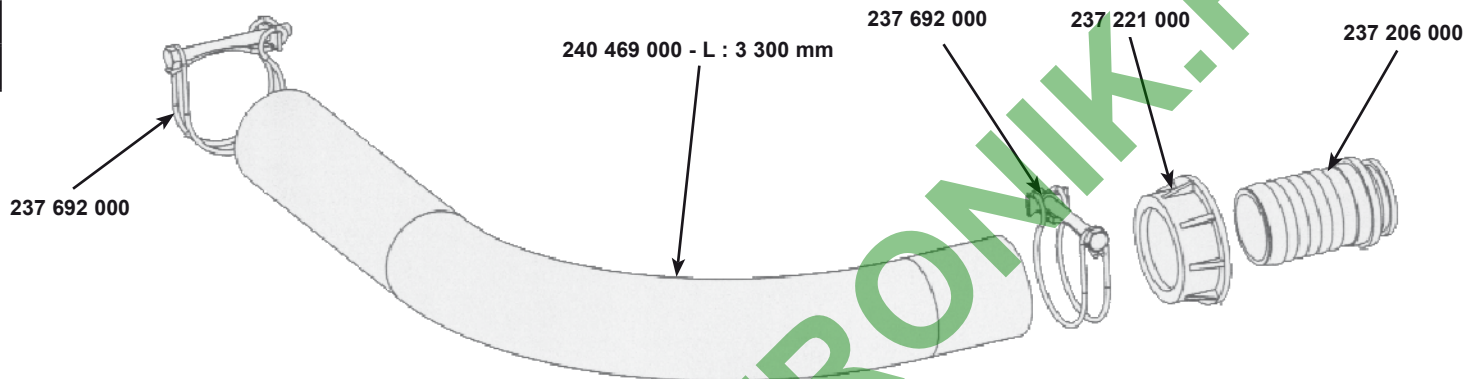




Km/h	25	40
17/39	X	X
21/39	X	X
23/45	X	



Modèles \ Km/h	25	40
17/39	X	X
17/40		X
21/39	X	X
21/40		X
23/45	X	



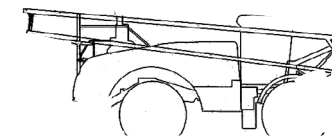
VERS INCORPORATEUR

Chapitre 9  
Planche E02  
Rep B



Chapitre 9  
Planche A12  
Rep K

VERS VANNE DE REFOULEMENT  
POSITION VOLANT 2



CATALOGUE MAESTRIA  
RAMPE AV 2004

Correctif mars 2009/March 2009 correction

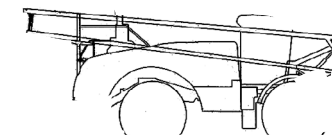
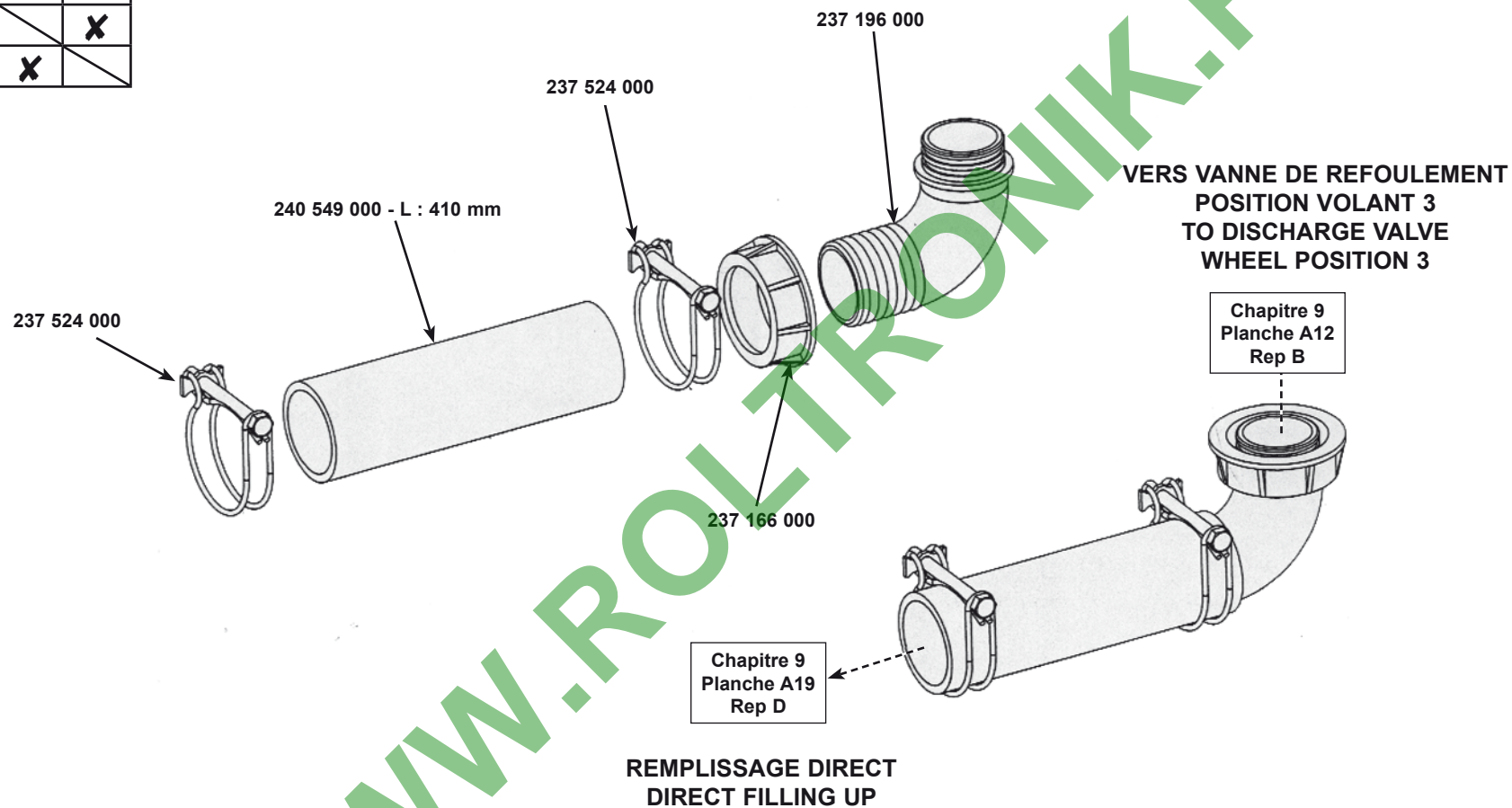
TUYAU ÉQUIPÉ INCORPORATEUR  
INCORPORATOR PIPE



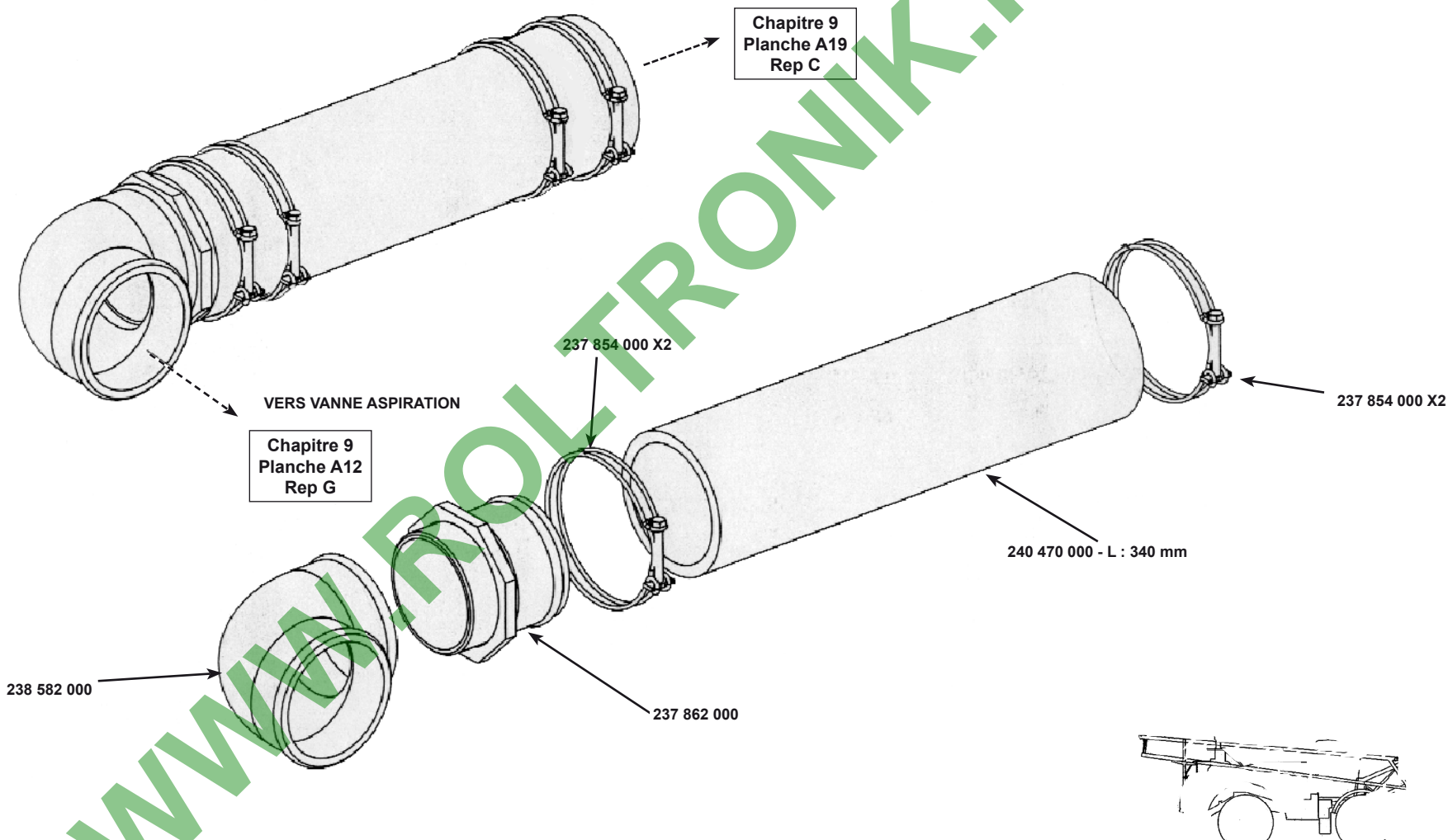
9  
A07  
02/06/05



Modèles \ Km/h	25	40
17/39	X	X
17/40		X
21/39	X	X
21/40		X
23/45	X	



Modèles \ Km/h	25	40
17/39	X	X
17/40		X
21/39	X	X
21/40		X
23/45	X	



**CATALOGUE MAESTRIA  
RAMPE AV 2004**

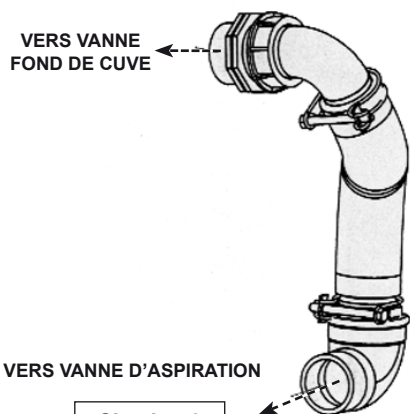
Correctif mars 2009/March 2009 correction

ASPIRATION CUVE PRINCIPALE  
MAIN TANK ASPIRATION

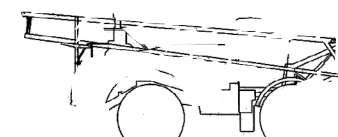
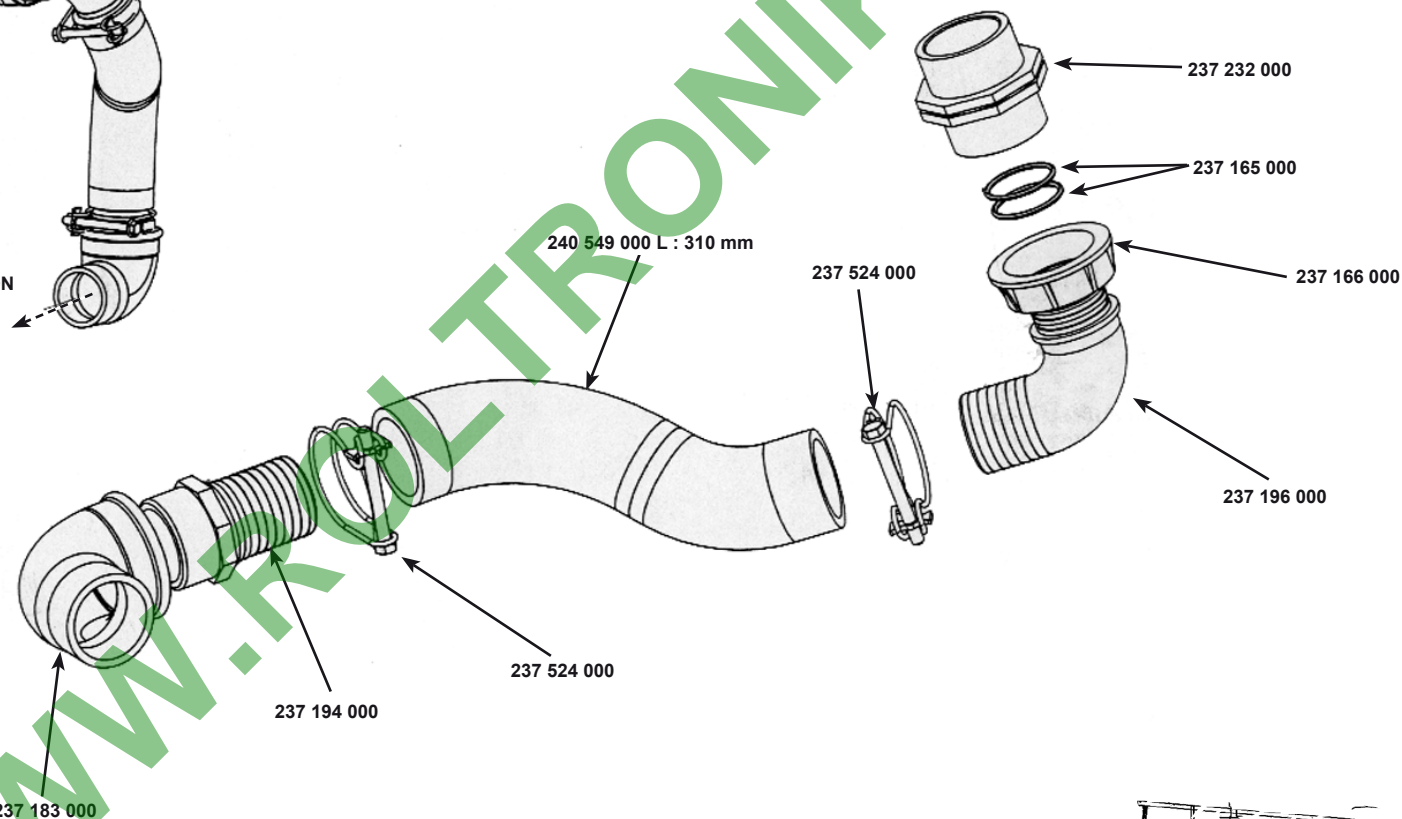


9  
A09  
02/06/05

Modèles \ Km/h	25	40
17/39	X	X
17/40		X
21/39	X	X
21/40		X
23/45	X	

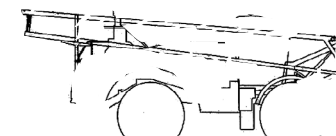
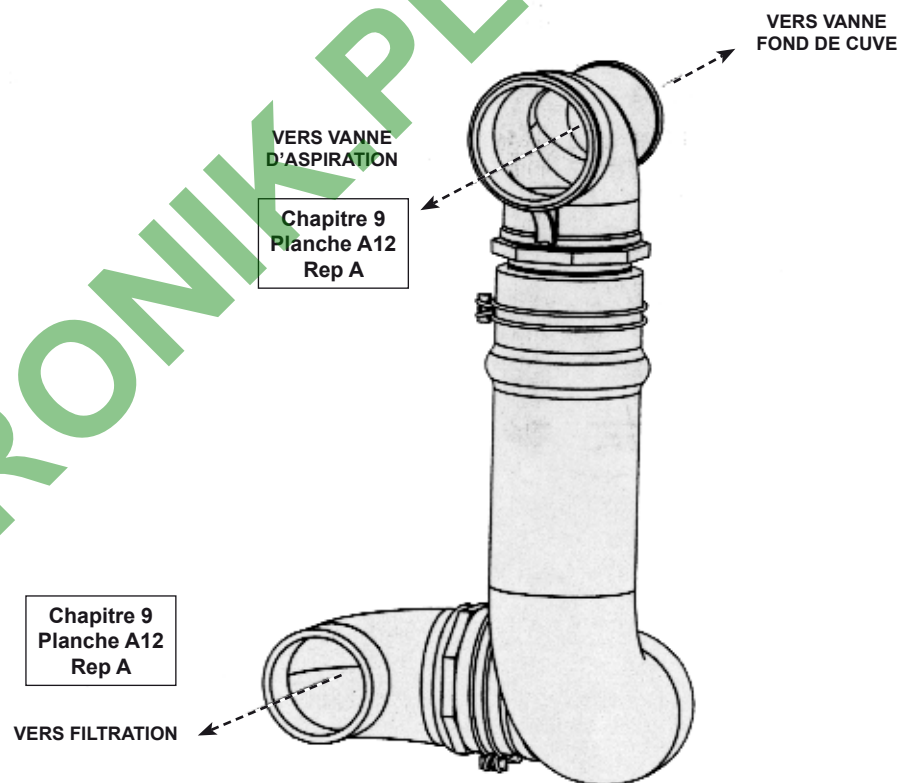
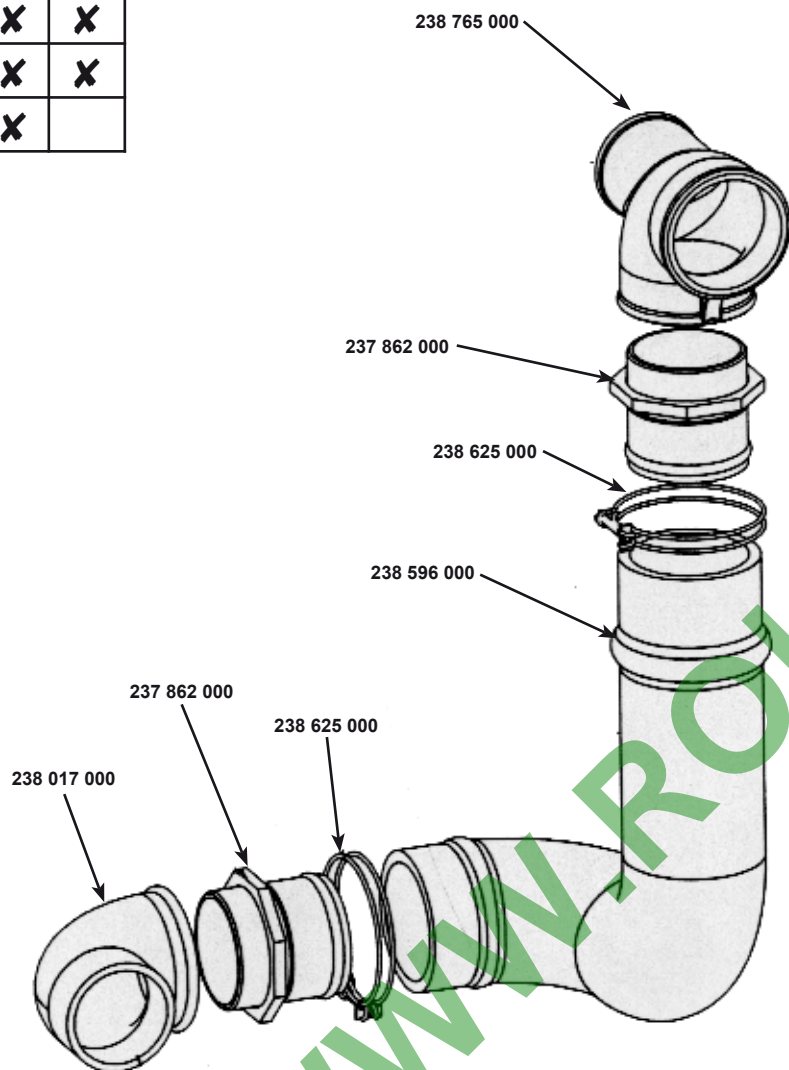


Chapitre 9  
Planche A11  
Rep A

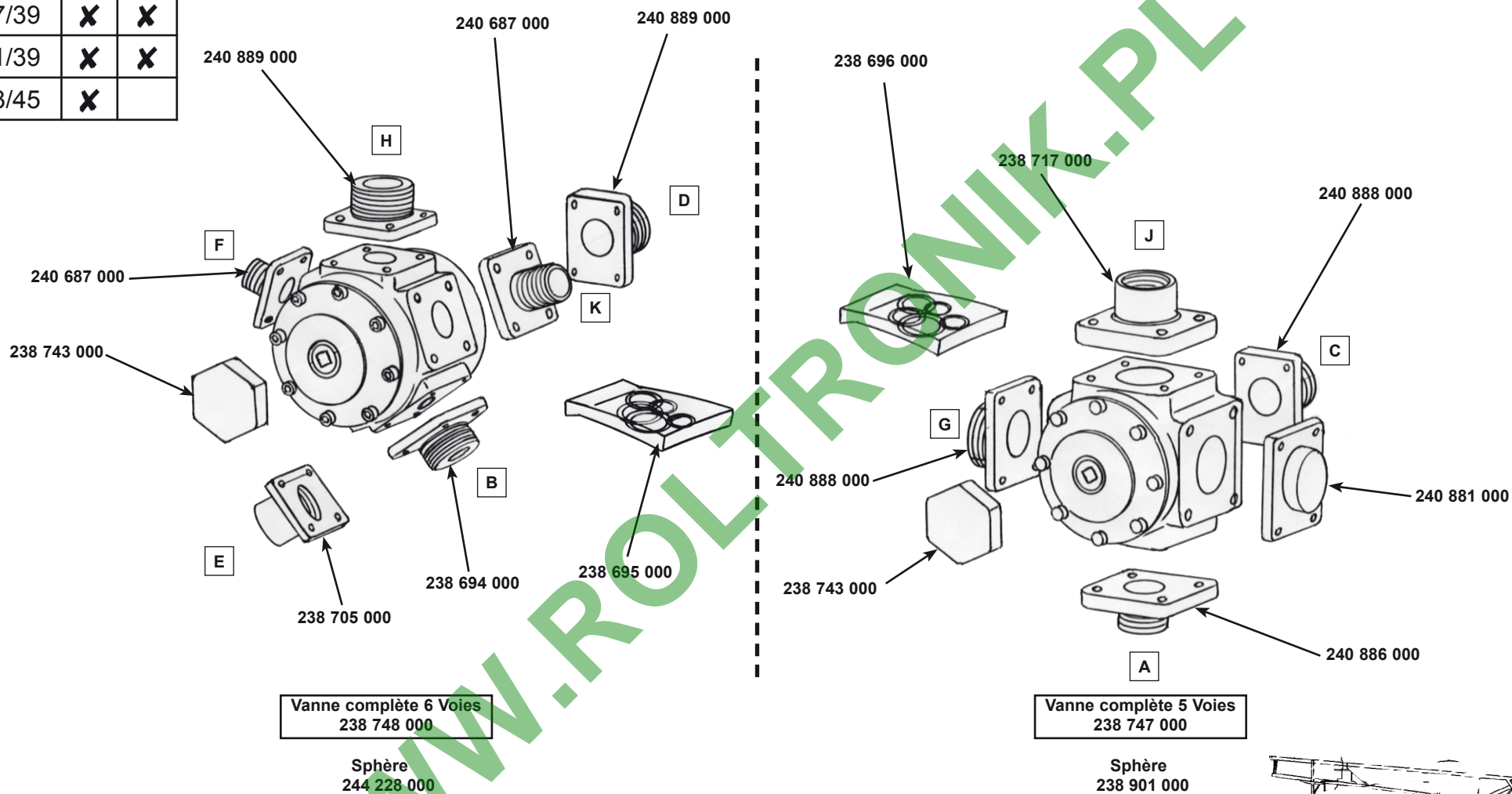


RETOUR VANNE FOND DE CUVE RETURN TO BOTTOM TANK VALVE		9 A10 02/06/05
--	--	----------------------

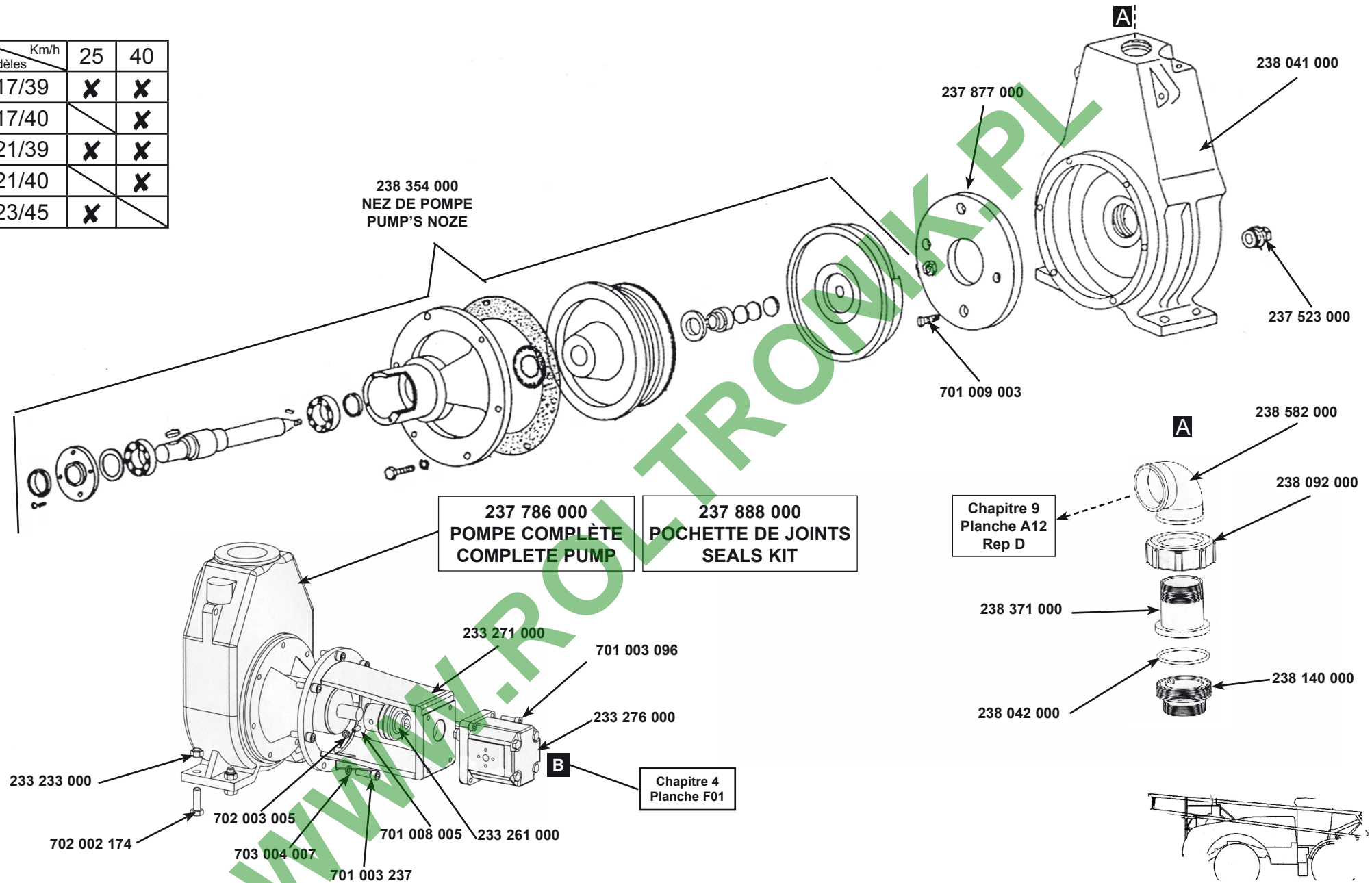
Km/h Modèles	25	40
17/39	X	X
21/39	X	X
23/45	X	



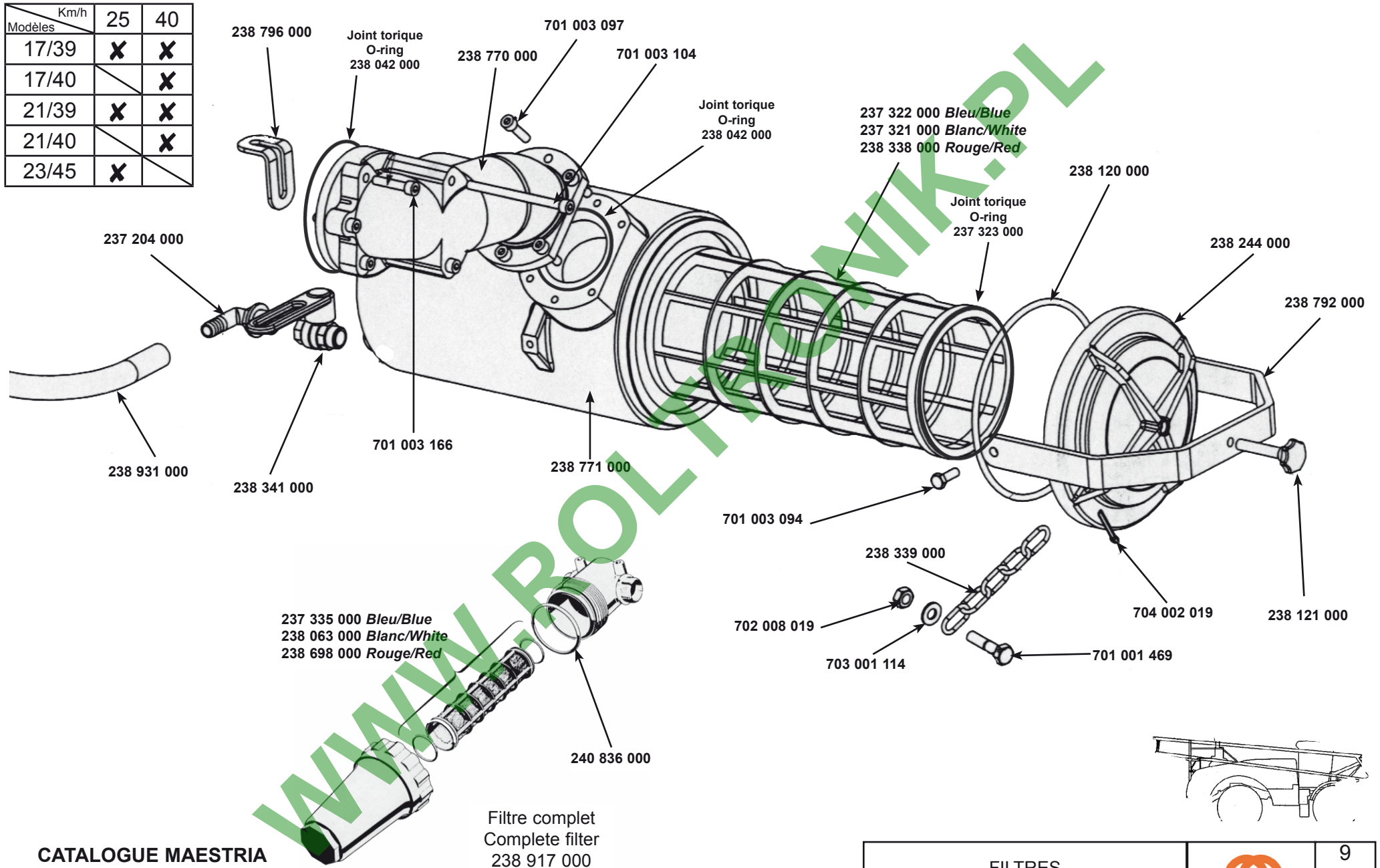
Km/h Modèles	25	40
17/39	X	X
21/39	X	X
23/45	X	



Km/h	25	40
Modèles		
17/39	X	X
17/40		X
21/39	X	X
21/40		X
23/45	X	

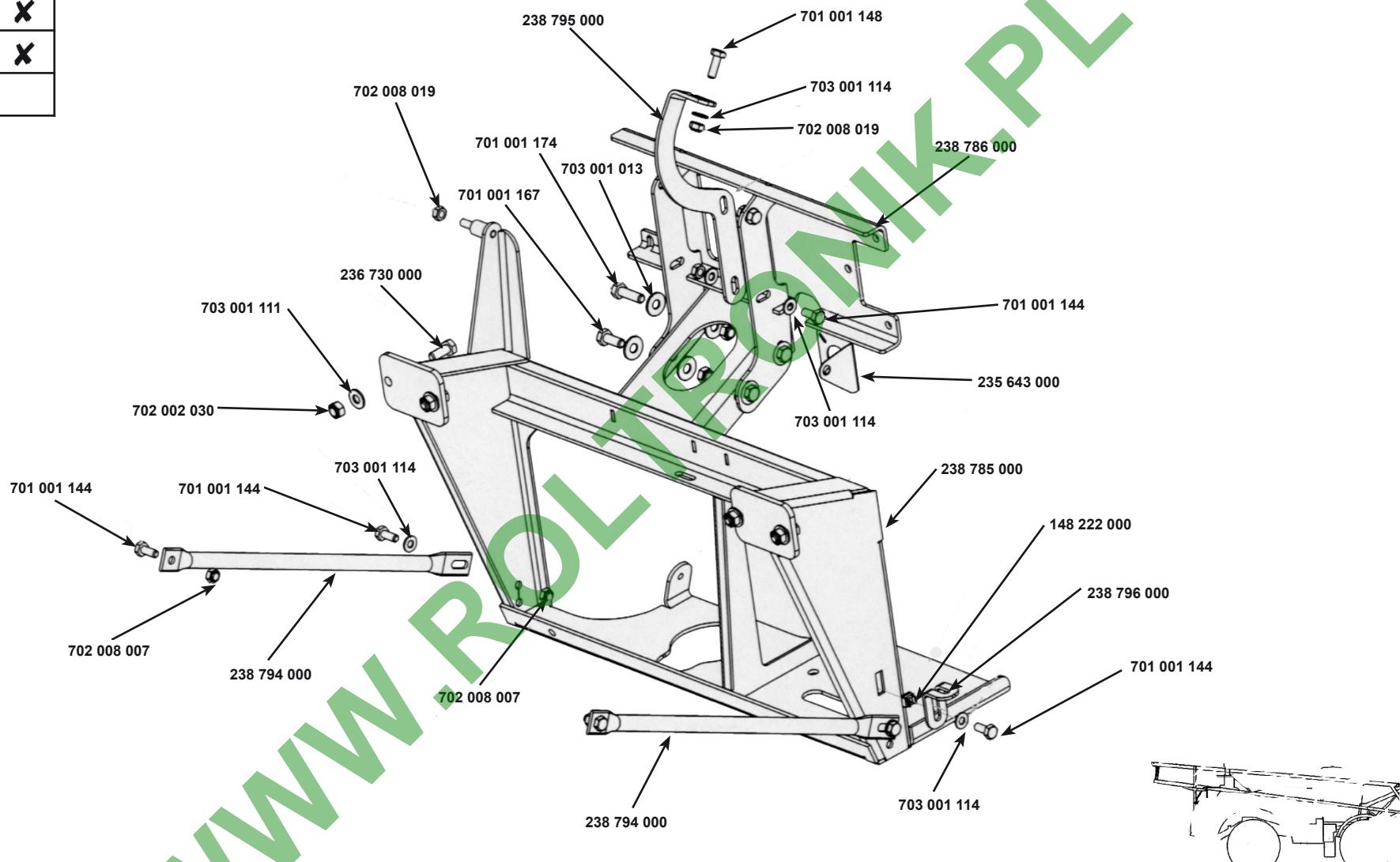


Km/h	25	40
17/39	X	X
17/40		X
21/39	X	X
21/40		X
23/45	X	



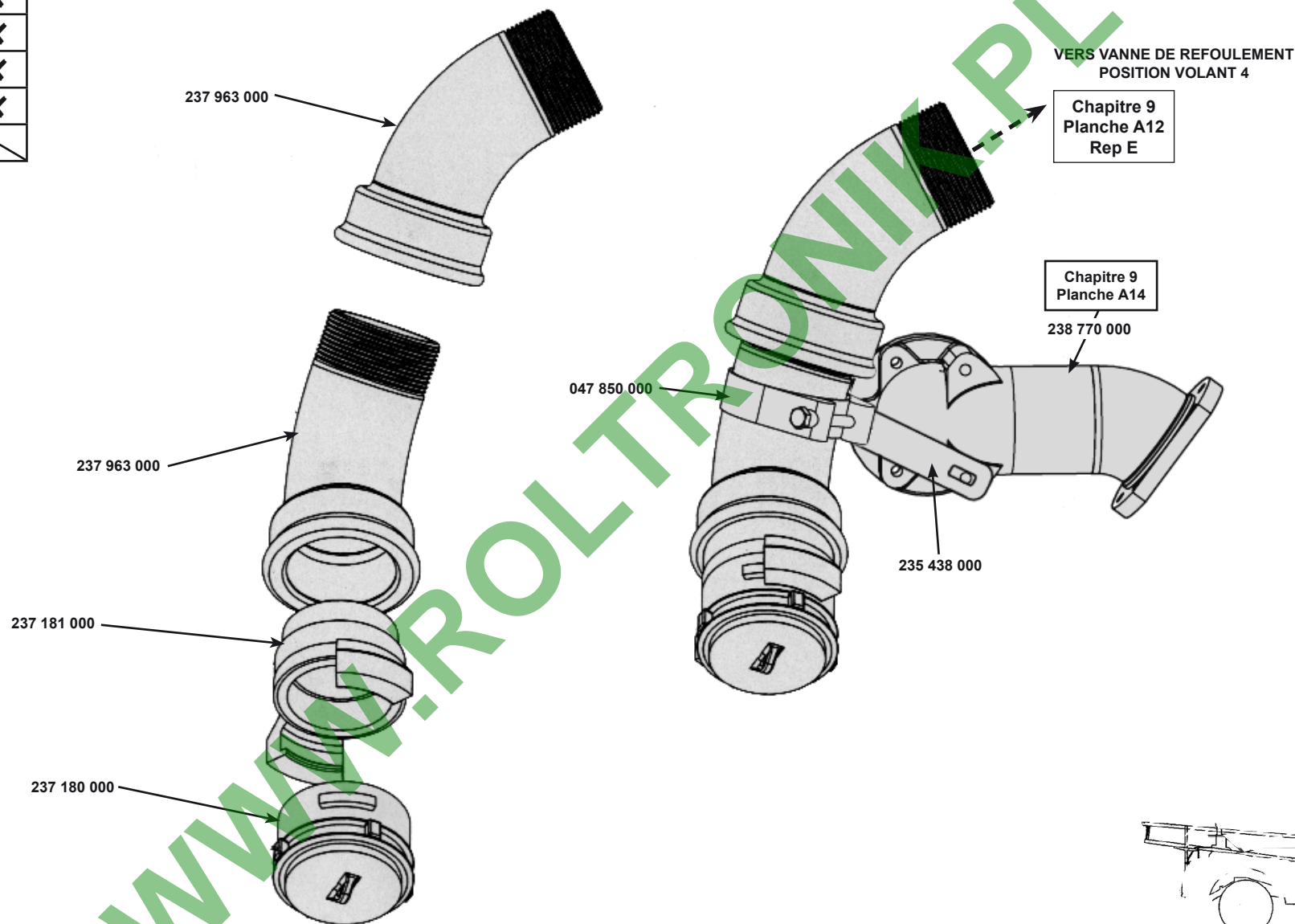
**CATALOGUE MAESTRIA  
RAMPE AV 2004**  
Correctif mars 2009/March 2009 correction

Km/h	25	40
17/39	X	X
21/39	X	X
23/45	X	





Modèles \ Km/h	25	40
17/39	X	X
17/40		X
21/39	X	X
21/40		X
23/45	X	



**CATALOGUE MAESTRIA  
RAMPE AV 2004**

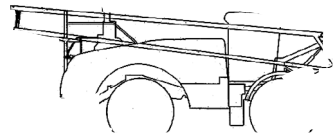
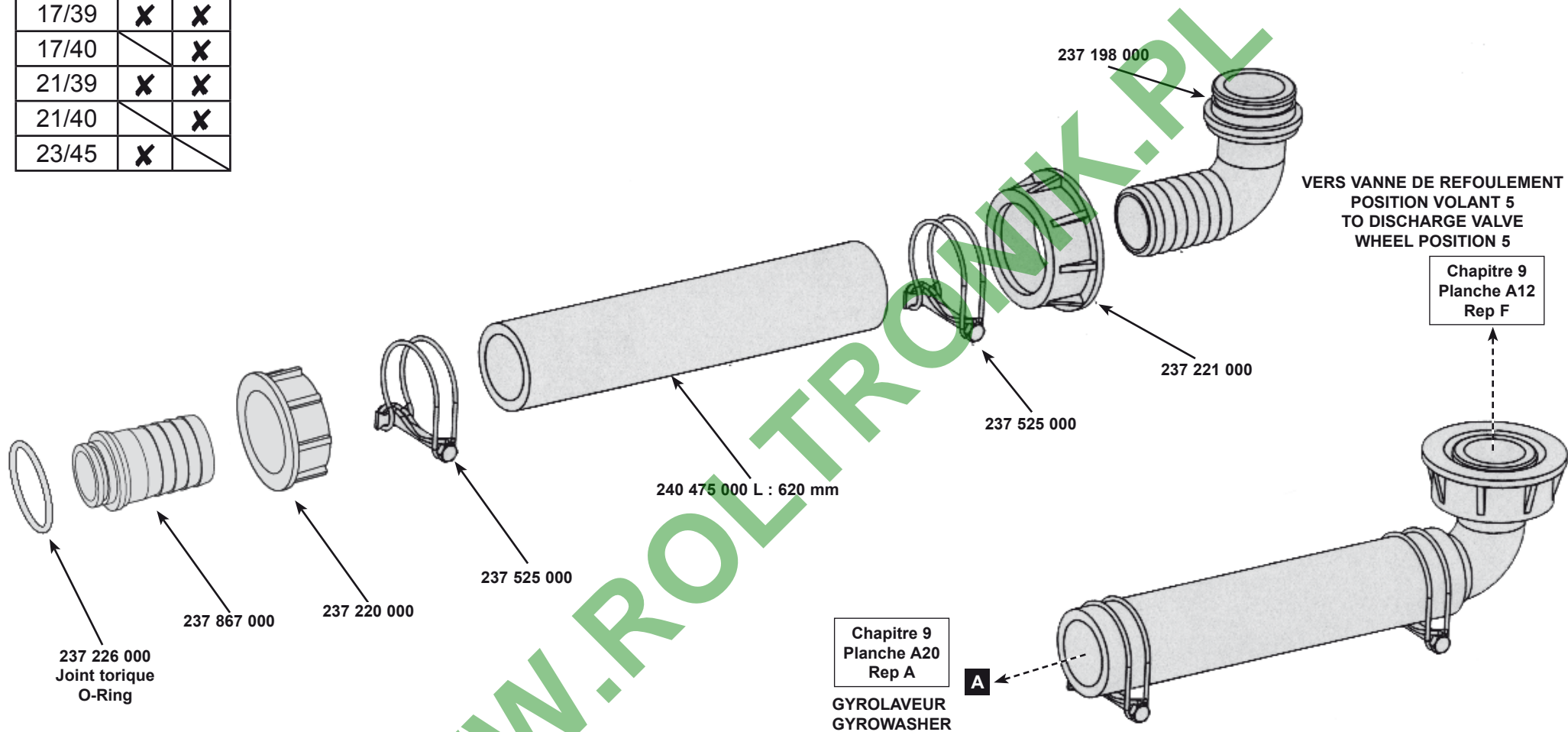
Correctif mars 2009/March 2009 correction

TRANSFERT



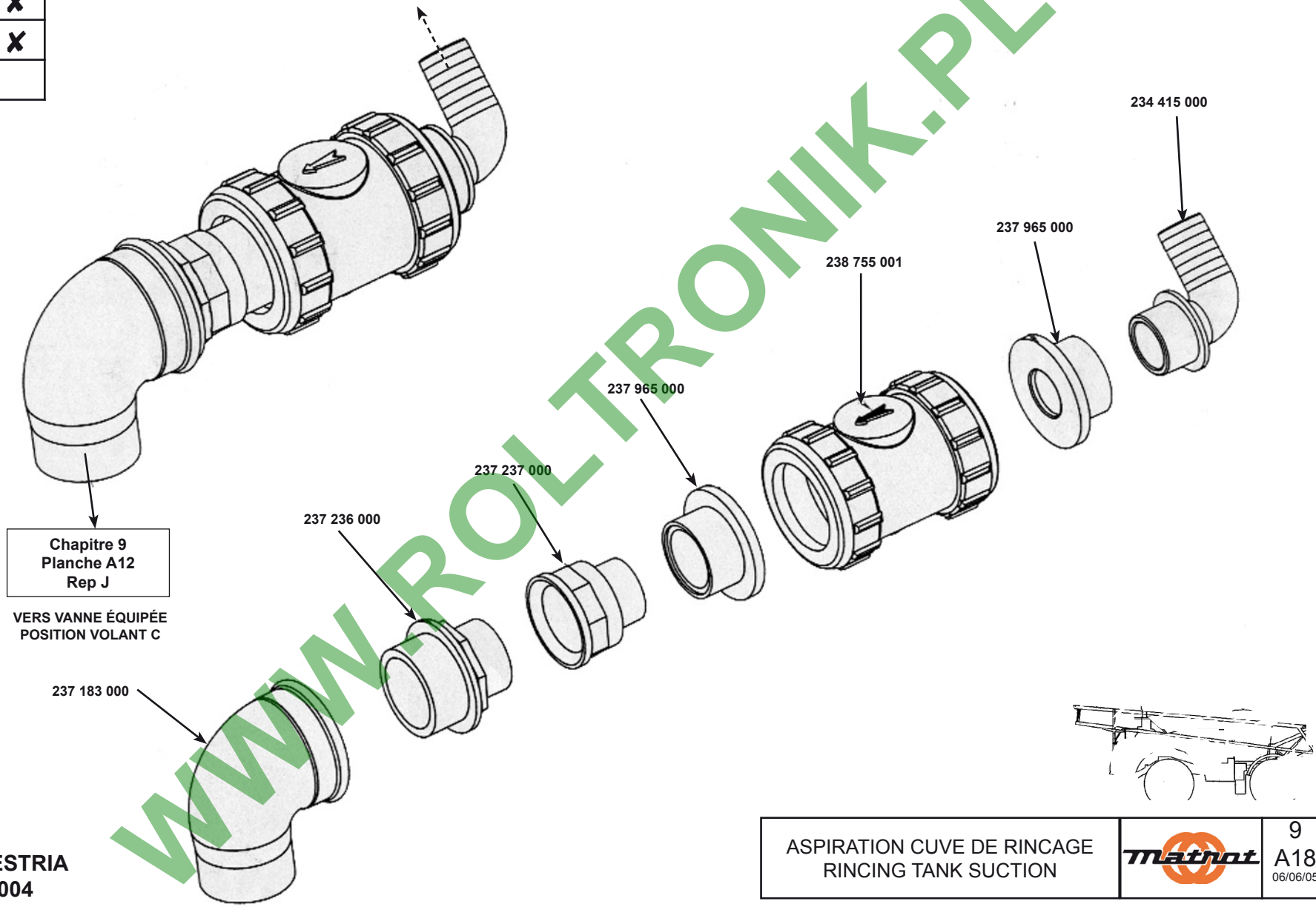
9  
A16  
06/06/05

Modèles \ Km/h	25	40
17/39	X	X
17/40		X
21/39	X	X
21/40		X
23/45	X	



Km/h Modèles	25	40
17/39	X	X
21/39	X	X
23/45	X	

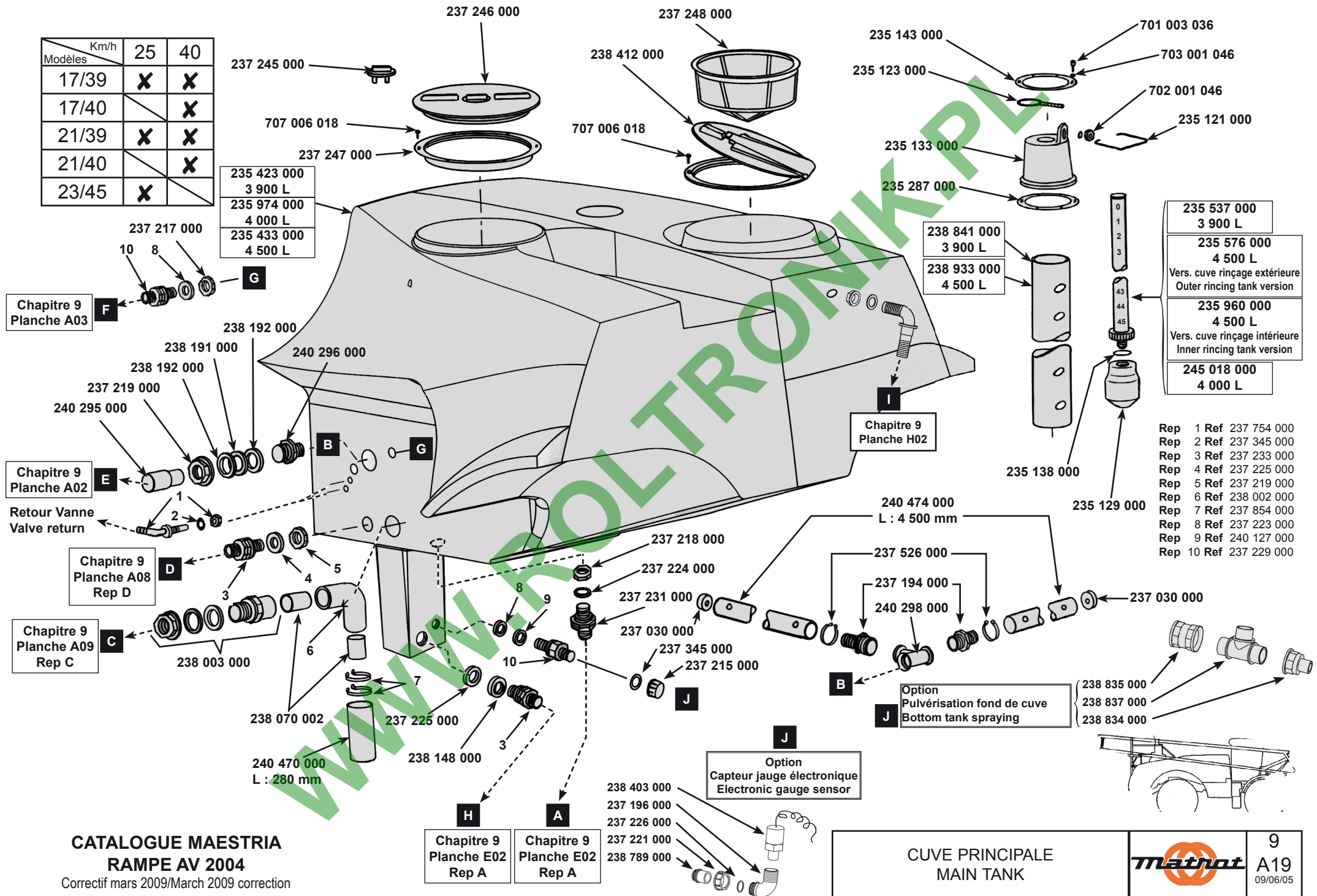
Chapitre 9  
Planche C01  
Rep A



Chapitre 9  
Planche A12  
Rep J

VERS VANNE ÉQUIPÉE  
POSITION VOLANT C

Km/h	25	40
17/39	X	X
17/40		X
21/39	X	X
21/40		X
23/45	X	



Chapitre 9  
Planche A03

Chapitre 9  
Planche A02

Chapitre 9  
Planche A08  
Rep D

Chapitre 9  
Planche A09  
Rep C

Chapitre 9  
Planche E02  
Rep A

Chapitre 9  
Planche E02  
Rep A

Chapitre 9  
Planche H02

Option  
Pulvérisation fond de cuve  
Bottom tank spraying

Option  
Capteur jauge électronique  
Electronic gauge sensor

CUVE PRINCIPALE  
MAIN TANK

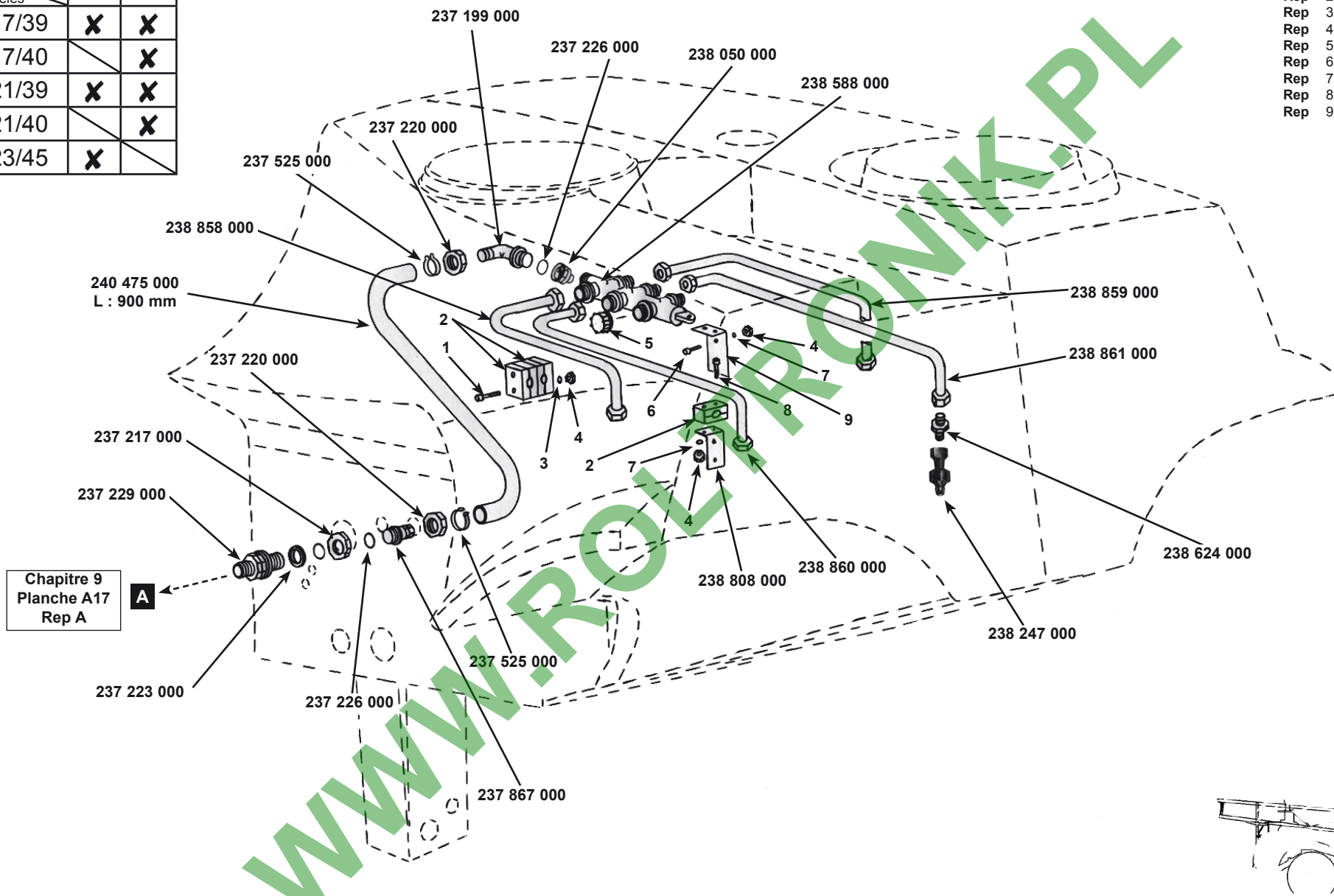
9  
A19  
09/06/05

CATALOGUE MAESTRIA  
RAMPE AV 2004

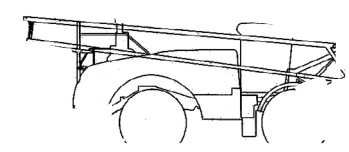
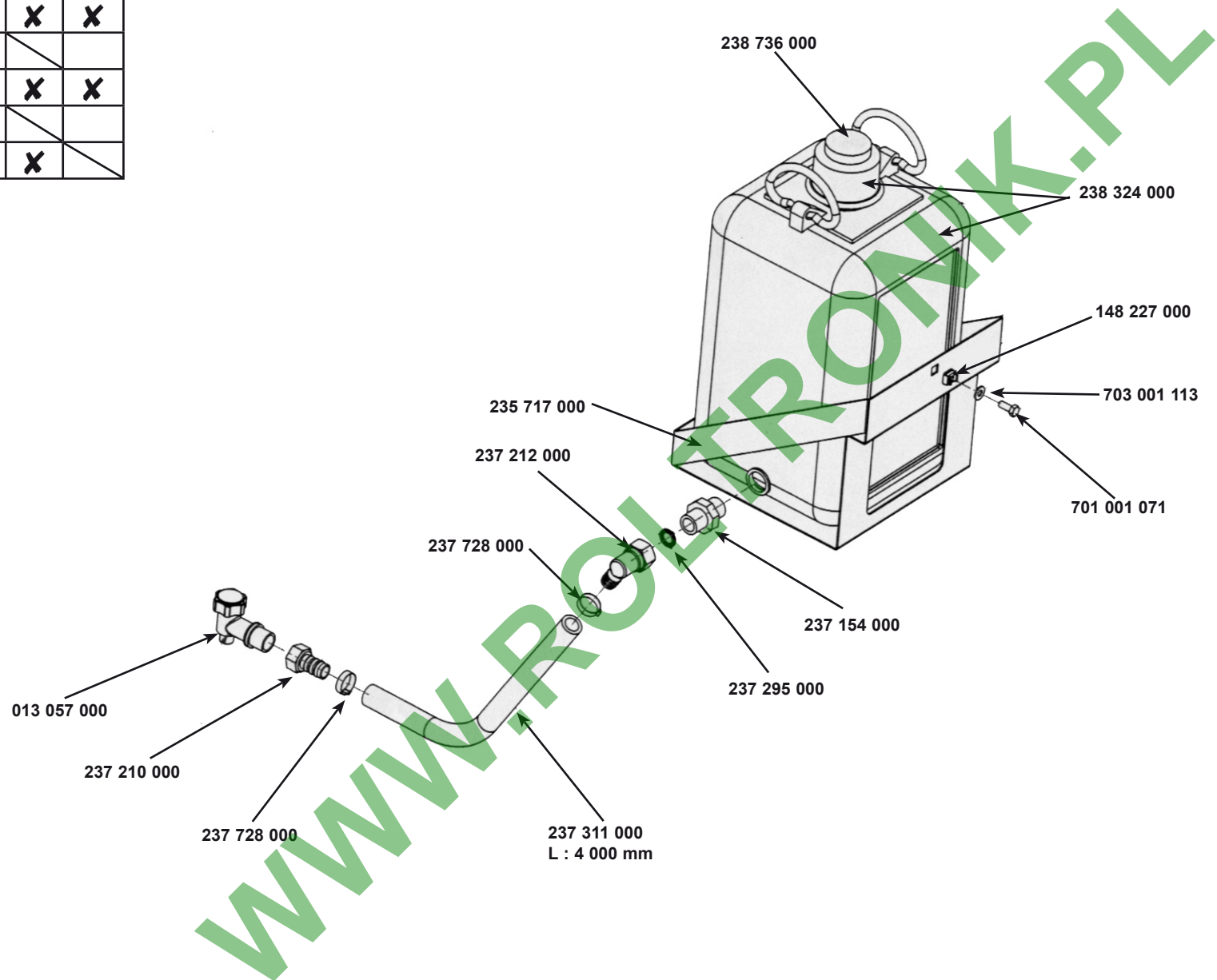
Correctif mars 2009/March 2009 correction

Modèles \ Km/h	25	40
17/39	X	X
17/40		X
21/39	X	X
21/40		X
23/45	X	

- Rep 1 Ref 701 003 082
- Rep 2 Ref 161 262 000
- Rep 3 Ref 703 002 029
- Rep 4 Ref 702 008 011
- Rep 5 Ref 238 587 000
- Rep 6 Ref 701 003 069
- Rep 7 Ref 703 001 048
- Rep 8 Ref 701 003 073
- Rep 9 Ref 238 808 000



Modèles \ Km/h	25	40
17/39	X	X
17/40		
21/39	X	X
21/40		
23/45	X	

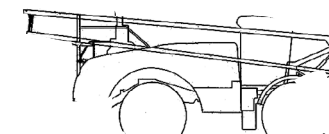
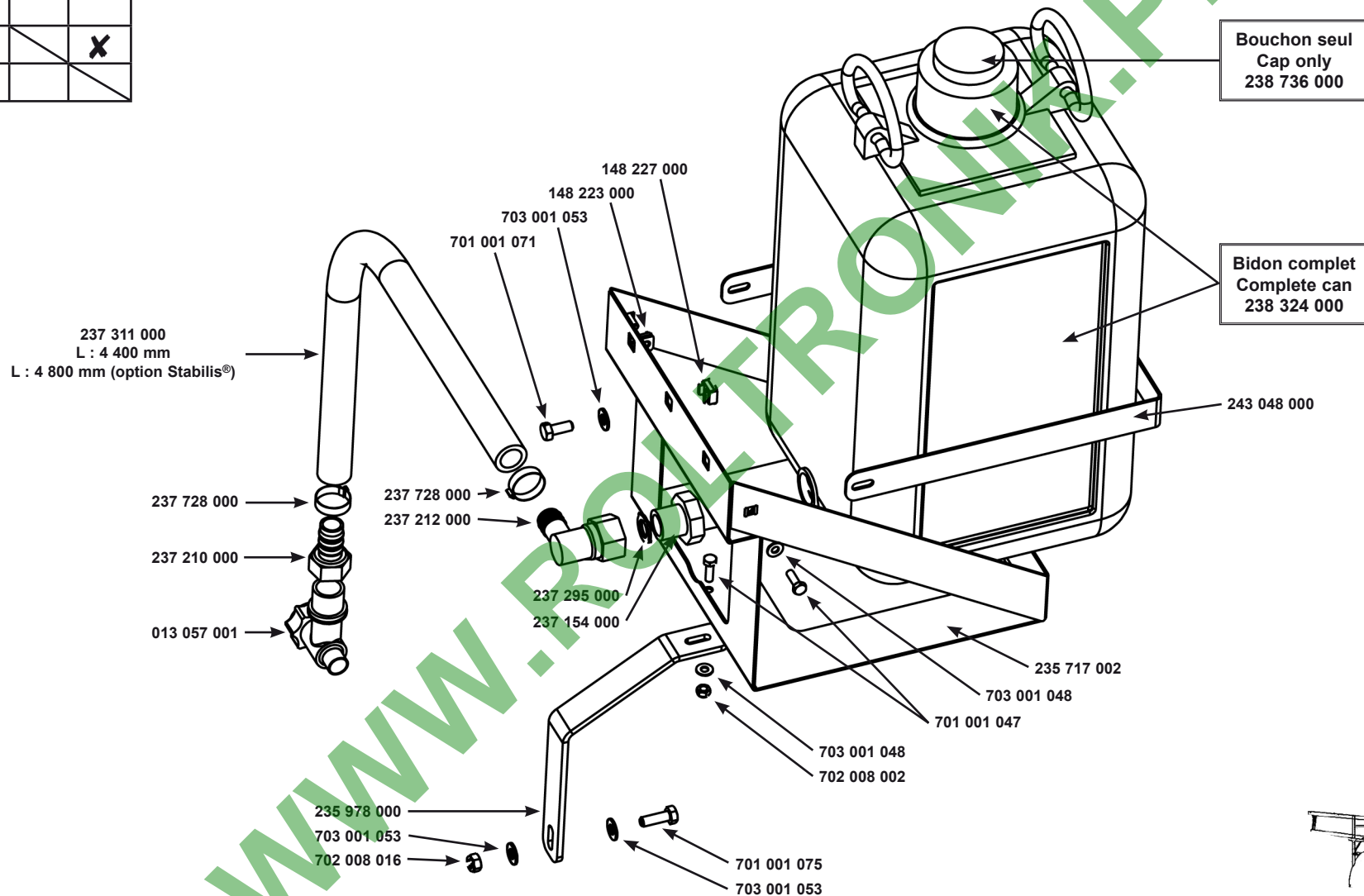


**CATALOGUE MAESTRIA  
RAMPE AV 2004**

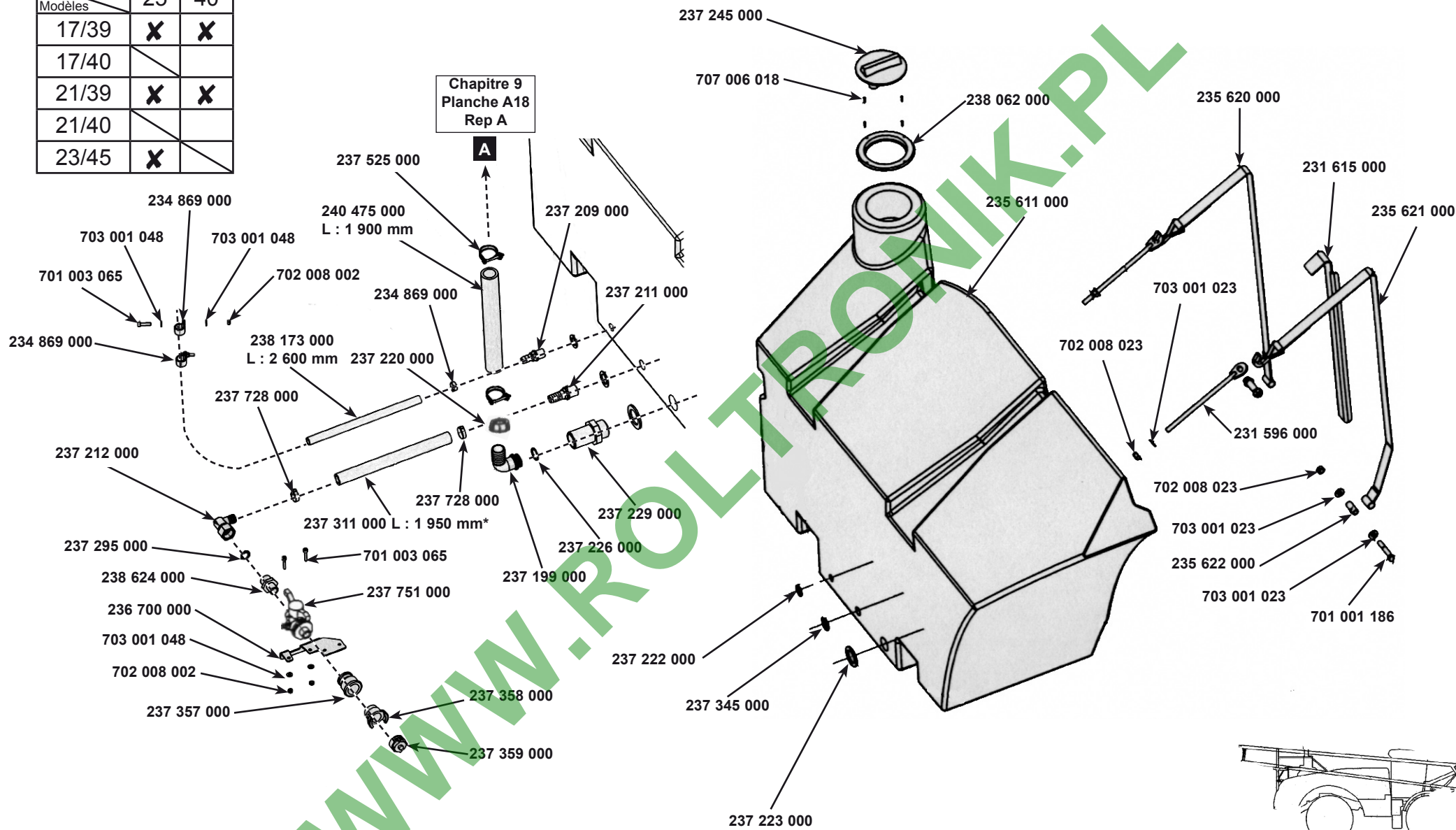
Correctif mars 2009/March 2009 correction

BIDON DE LAVE MAIN ÉQUIPÉ WASH-HAND CAN		9 B01 25/05/05
--	---	----------------------

Modèles \ Km/h	25	40
17/39		
17/40		X
21/39		
21/40		X
23/45		



Modèles \ Km/h	25	40
17/39	X	X
17/40		
21/39	X	X
21/40		
23/45	X	



**CATALOGUE MAESTRIA**  
**RAMPE AV 2004**  
Correctif mars 2009/March 2009 correction

\* Option commande de rinçage depuis cabine, remplacer réf 237 311 000 L : 1 950 mm par réf 237 311 000 L : 650 mm - 1 400 mm - 400 mm - 4 800 mm - 150 mm - 100 mm.  
\* Rinsing command from cab option, substitute item 237 311 000 L : 1 950 mm by item 237 311 000 L : 650 mm - 1 400 mm - 400 mm - 4 800 mm - 150 mm - 100 mm.

CUVE DE RINÇAGE  
RINSING TANK

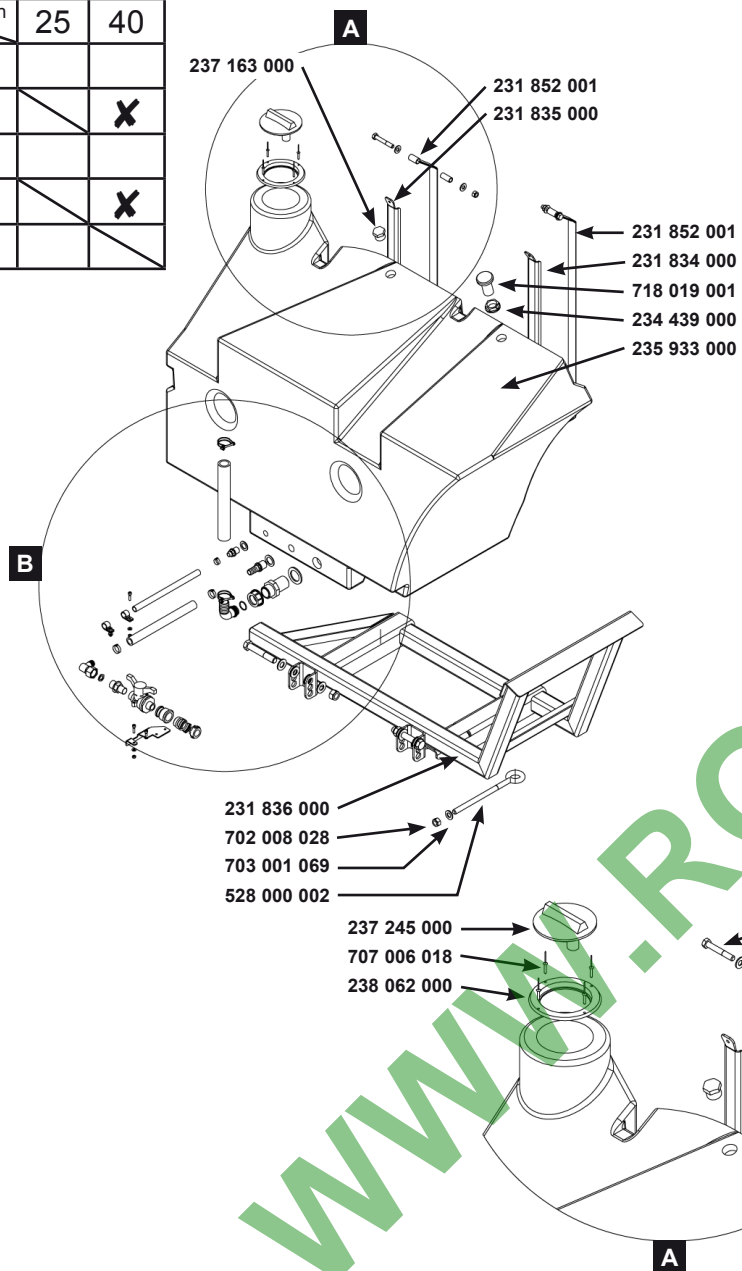


9  
C01  
24/05/05



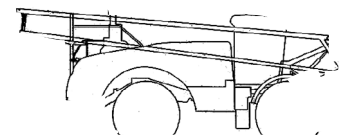
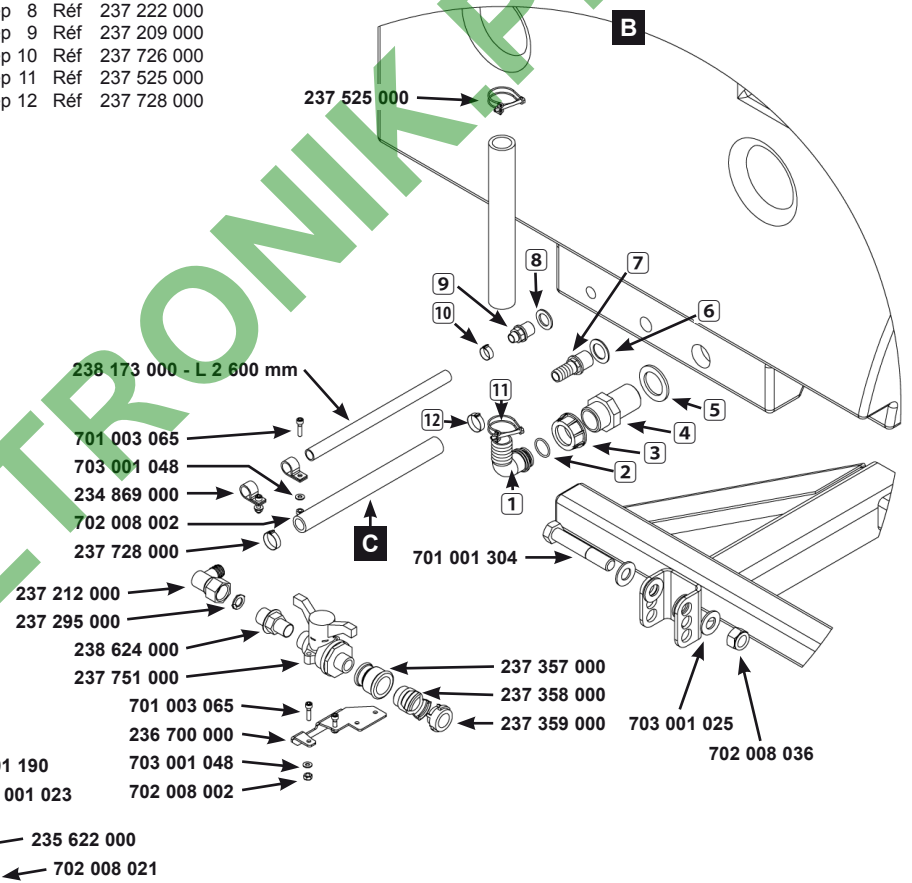


Km/h	25	40
17/39		
17/40		X
21/39		
21/40		X
23/45		

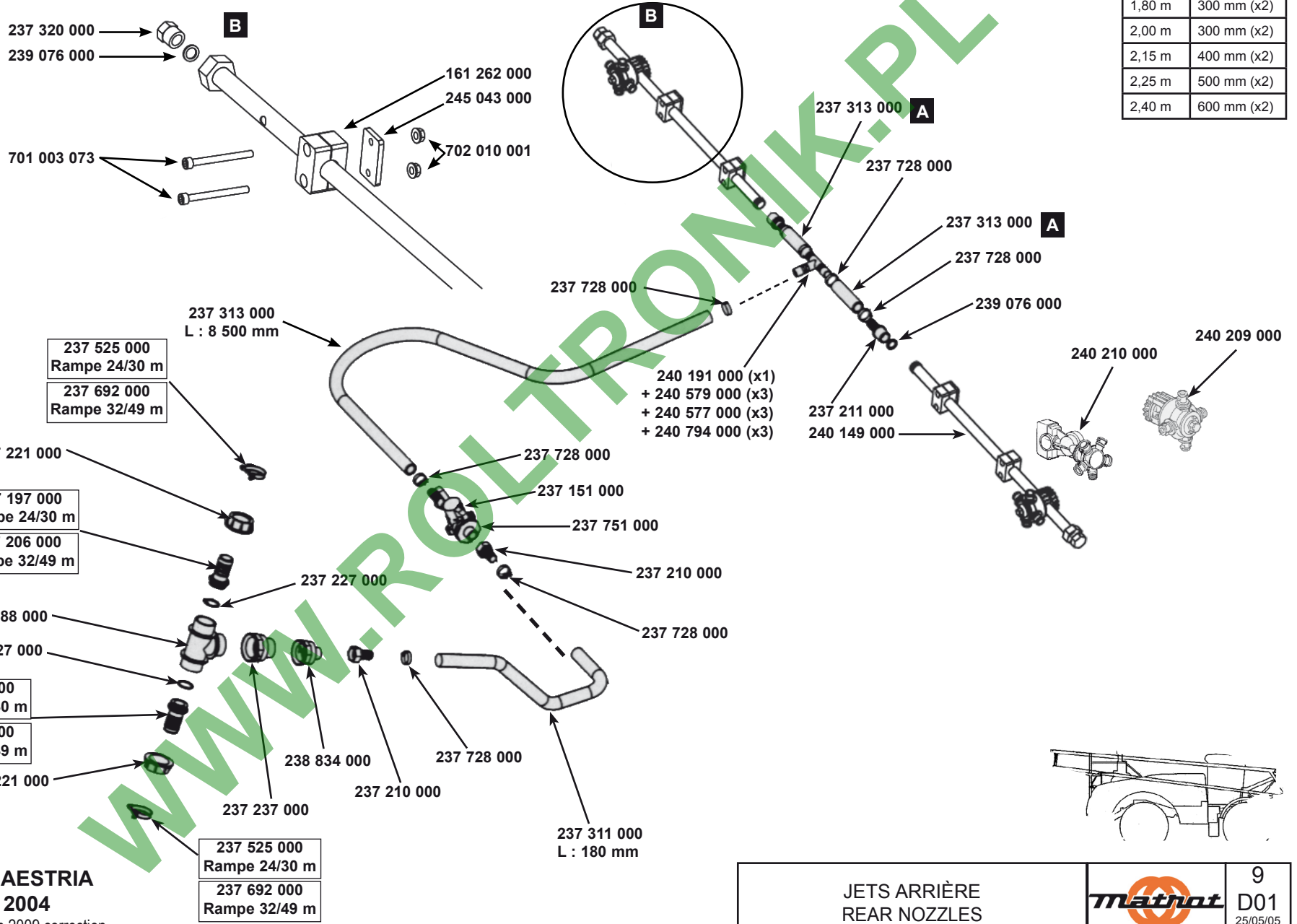


- Rep 1 Réf 237 199 000
- Rep 2 Réf 237 226 000
- Rep 3 Réf 237 220 000
- Rep 4 Réf 237 229 000
- Rep 5 Réf 237 223 000
- Rep 6 Réf 237 345 000
- Rep 7 Réf 237 211 000
- Rep 8 Réf 237 222 000
- Rep 9 Réf 237 209 000
- Rep 10 Réf 237 726 000
- Rep 11 Réf 237 525 000
- Rep 12 Réf 237 728 000

**C** Réf 237 311 000 L : 1 950 mm - Option commande de rinçage depuis cabine, remplacer la précédente référence par réf 237 311 000 L : 650 mm - 1 400 mm - 400 mm - 4 800 mm - 150 mm - 100 mm.  
 Item 237 311 000 L : 1 950 mm - Rinsing command from cab option, substitute the previous item by item 237 311 000 L : 650 mm - 1 400 mm - 400 mm - 4 800 mm - 150 mm - 100 mm.



Km/h Modèles	25	40
17/39	X	X
17/40		X
21/39	X	X
21/40		X
23/45	X	

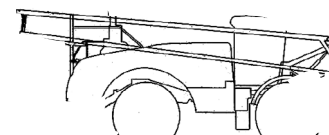
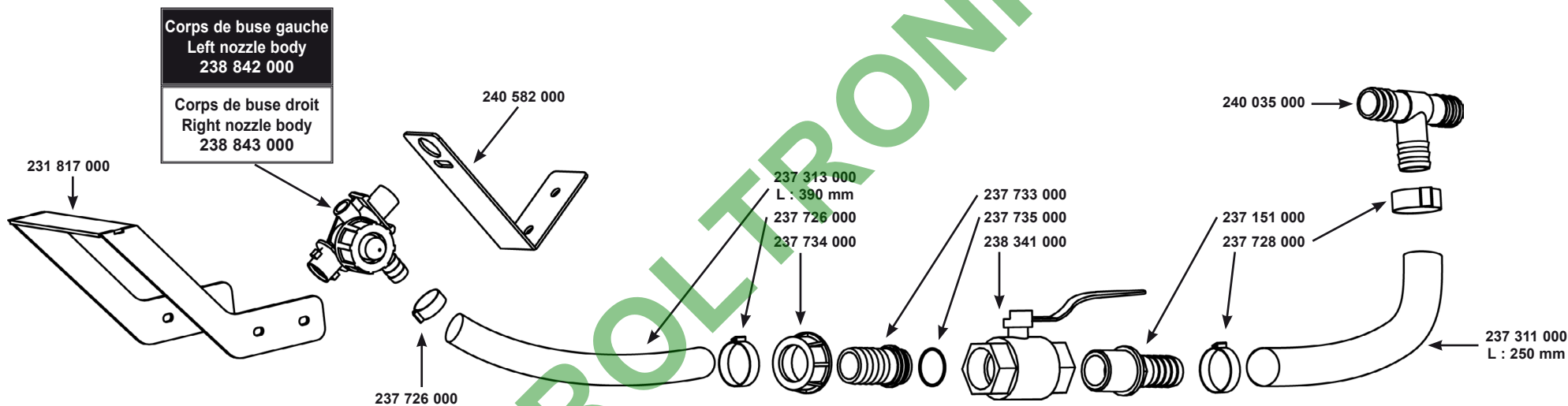


A	Voies / Tracks	Longueur/ Length
	1,80 m	300 mm (x2)
	2,00 m	300 mm (x2)
	2,15 m	400 mm (x2)
	2,25 m	500 mm (x2)
	2,40 m	600 mm (x2)

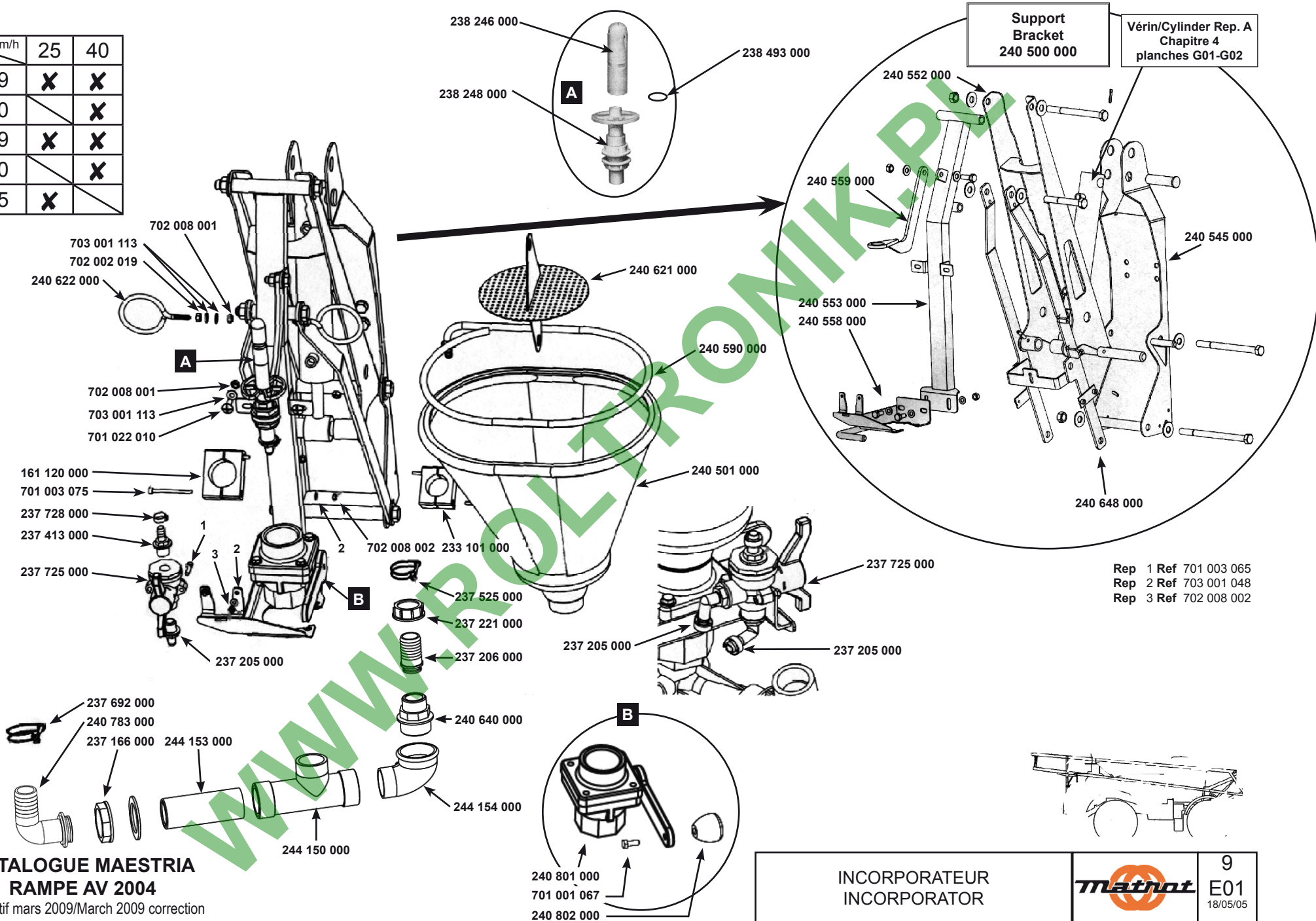
**CATALOGUE MAESTRIA  
RAMPE AV 2004**

Correctif mars 2009/March 2009 correction

Modèles \ Km/h	25	40
17/39	X	X
17/40		X
21/39	X	X
21/40		X
23/45	X	



Km/h	25	40
17/39	X	X
17/40		X
21/39	X	X
21/40		X
23/45	X	



Support Bracket  
240 500 000

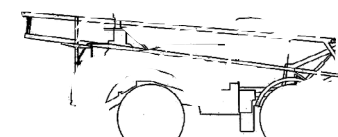
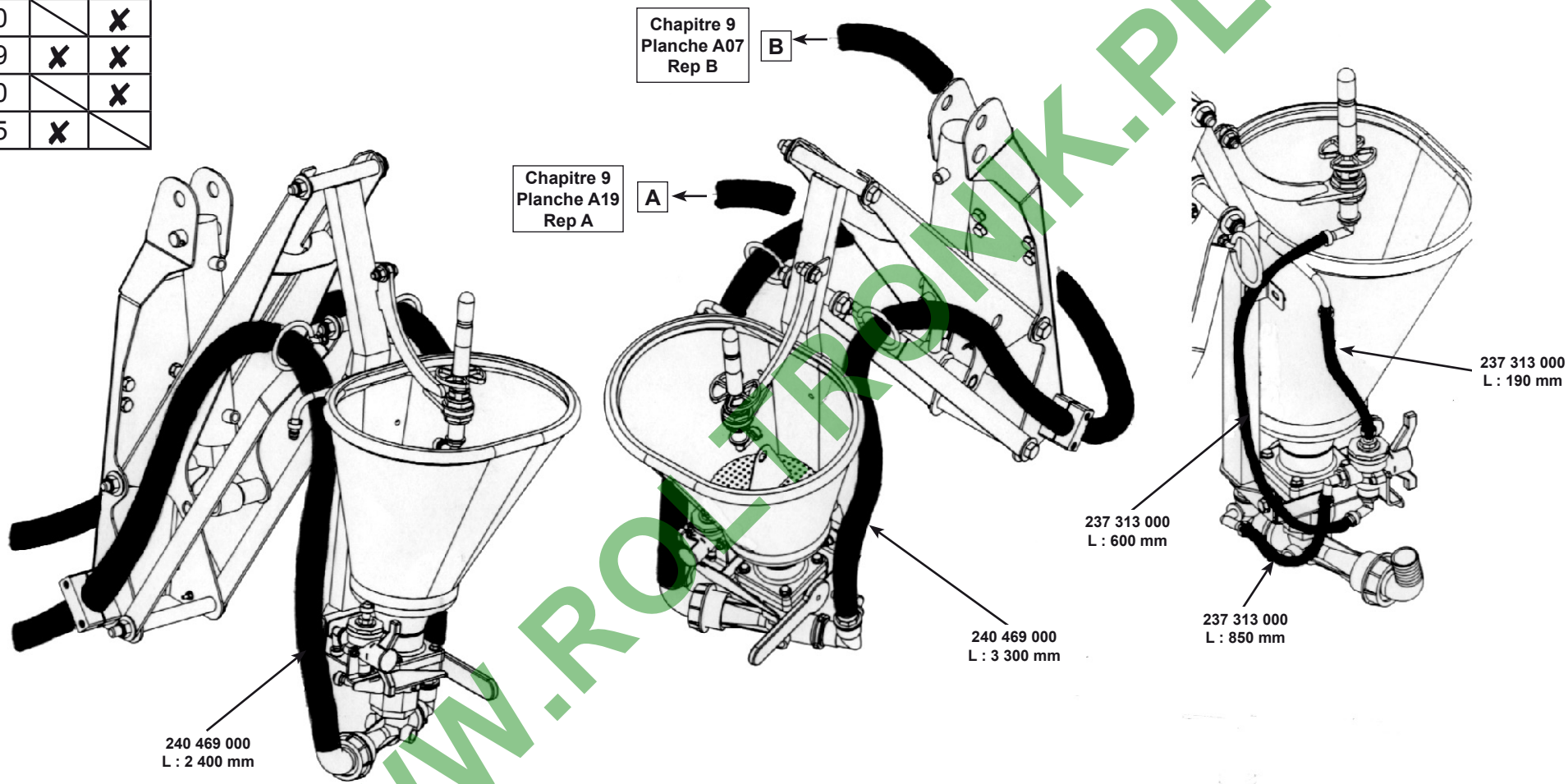
Vérin/Cylinder Rep. A  
Chapitre 4  
planches G01-G02

Rep 1 Ref 701 003 065  
Rep 2 Ref 703 001 048  
Rep 3 Ref 702 008 002

INCORPORATEUR INCORPORATOR		9 E01 18/05/05
-------------------------------	--	----------------------

**CATALOGUE MAESTRIA**  
**RAMPE AV 2004**  
Correctif mars 2009/March 2009 correction

Modèles \ Km/h	25	40
17/39	X	X
17/40		X
21/39	X	X
21/40		X
23/45	X	



**CATALOGUE MAESTRIA  
RAMPE AV 2004**

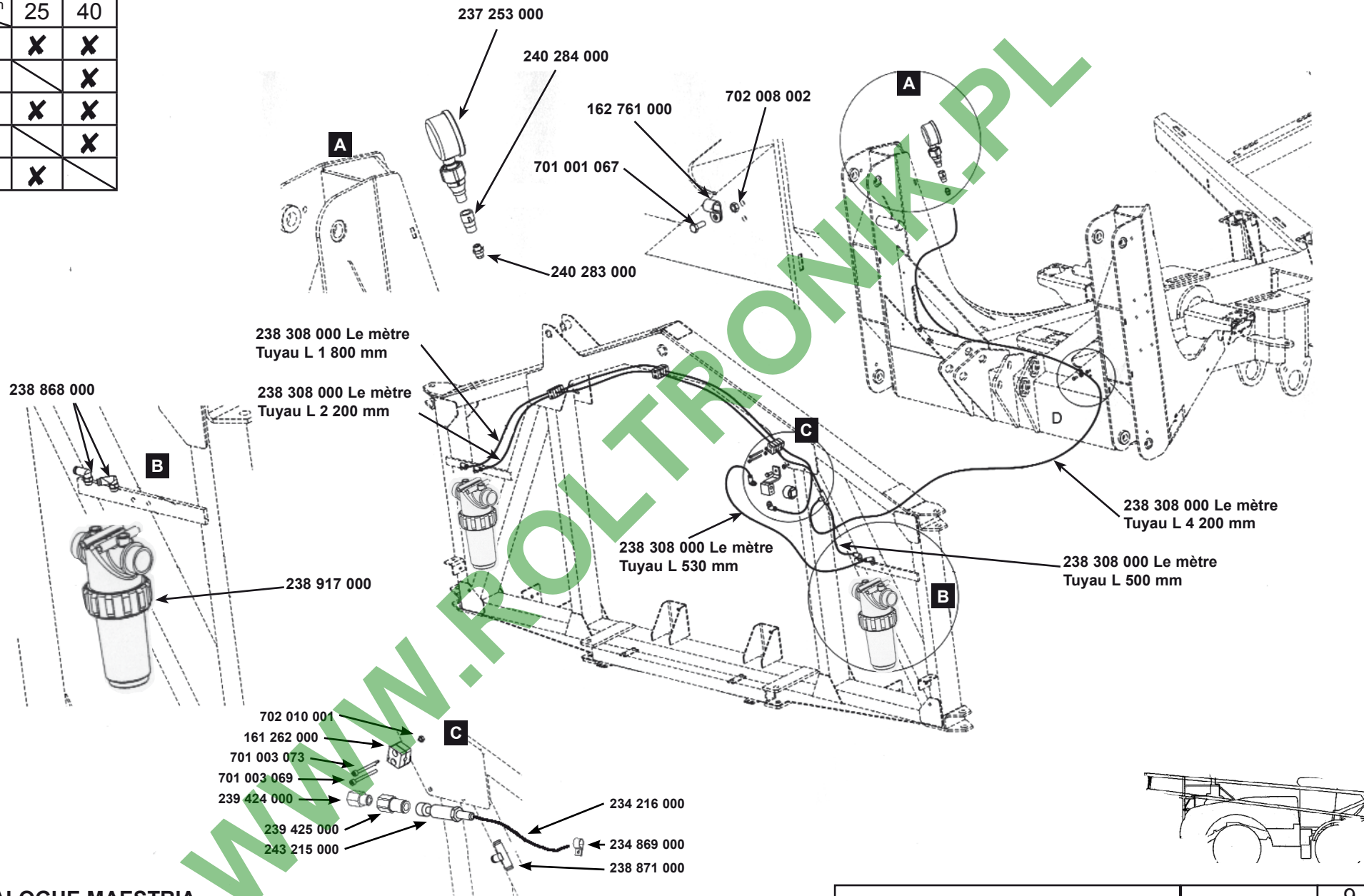
Correctif mars 2009/March 2009 correction

INCORPORATEUR  
INCORPORATOR



9  
E02  
19/05/05

Modèles \ Km/h	25	40
17/39	X	X
17/40		X
21/39	X	X
21/40		X
23/45	X	



**CATALOGUE MAESTRIA  
RAMPE AV 2004**

Correctif mars 2009/March 2009 correction

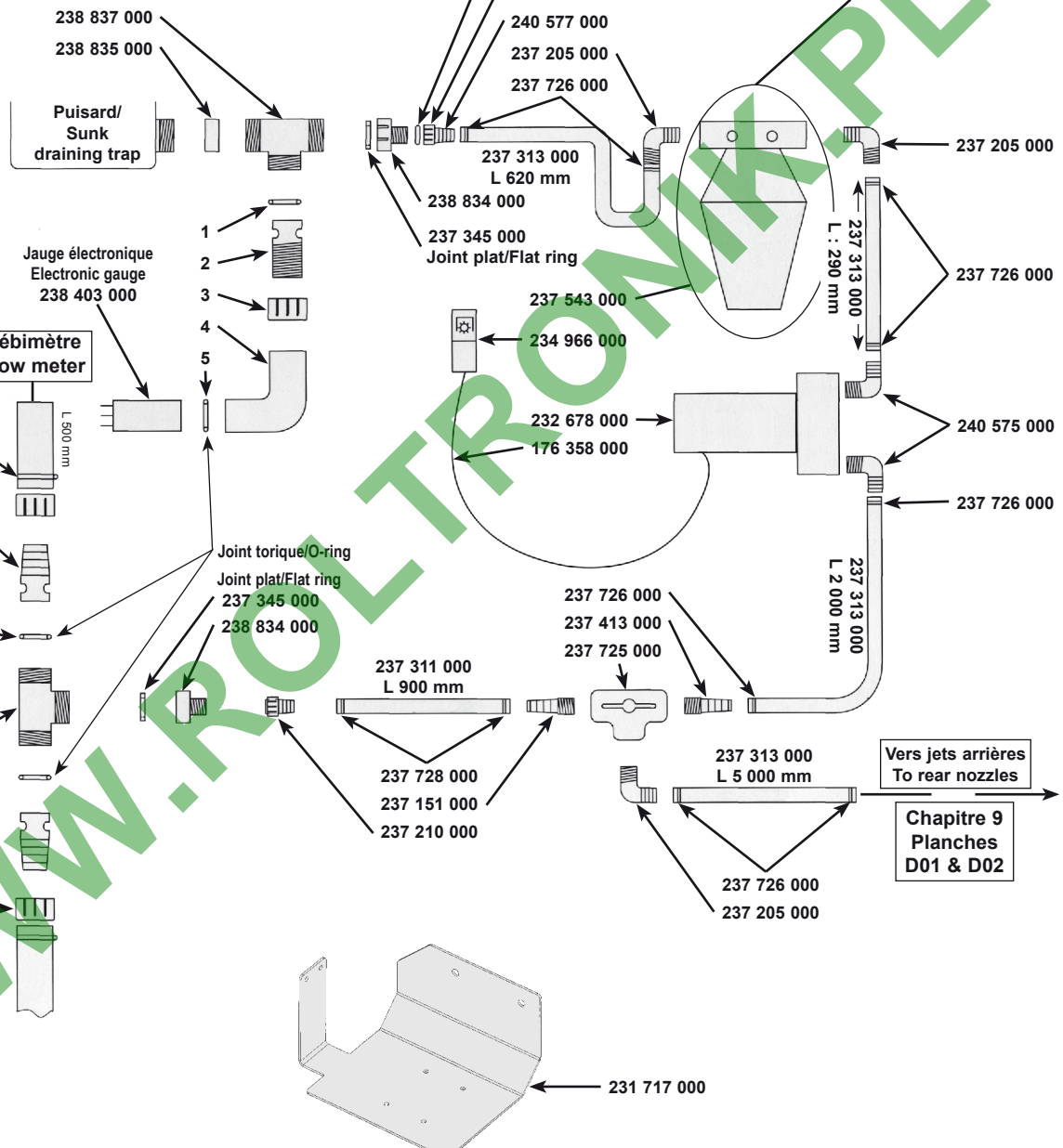
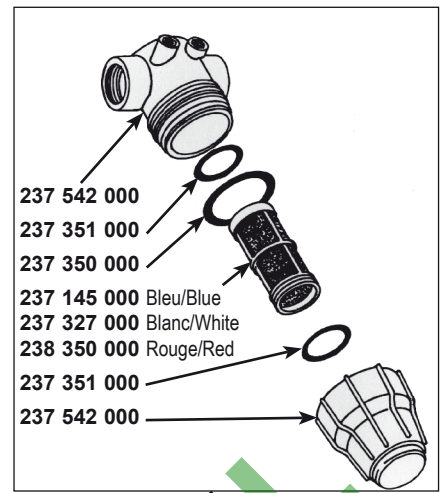
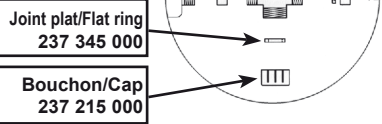
CIRCUIT CAPTEUR DE PRESSION  
PRESSURE SENSOR CIRCUIT



9  
F01  
06/06/05

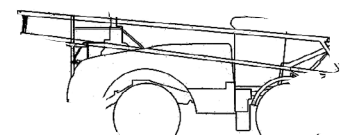
Km/h	25	40
Modèles		
17/39	X	X
17/40		X
21/39	X	X
21/40		X
23/45	X	

**Configuration sans jauge électronique**  
**Configuration without electronic gauge**



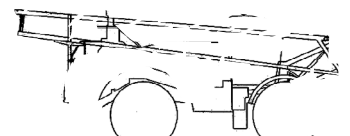
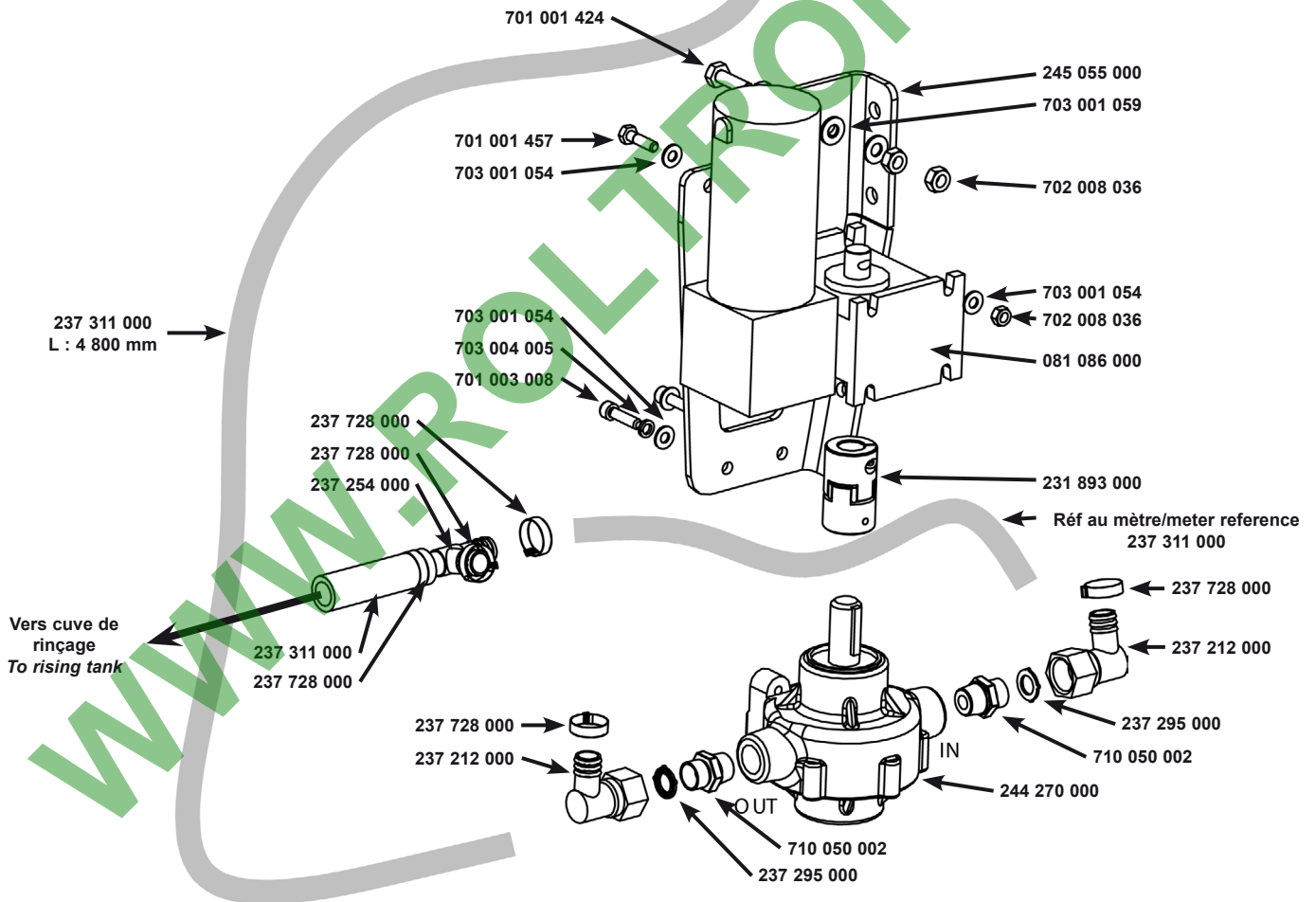
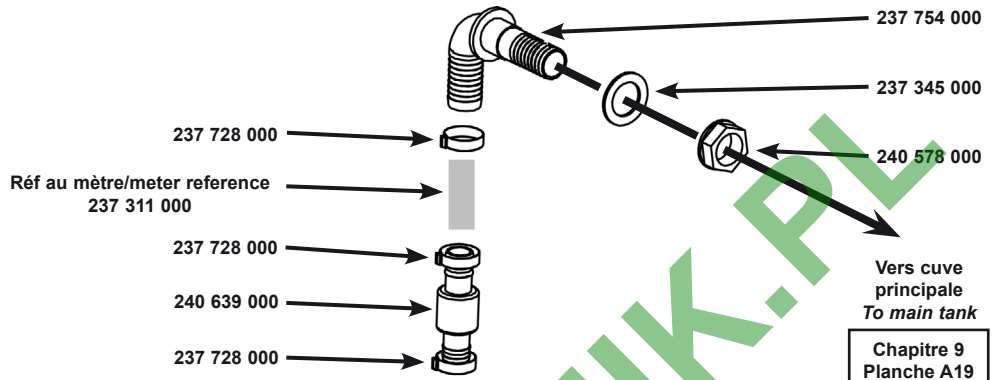
- 238 837 000
- 238 835 000
- Puisard/  
Sunk  
draining trap
- Jauge électronique  
Electronic gauge  
238 403 000
- Débitmètre  
Flow meter
- 237 692 000
- 237 867 000  
Rampe/Boom 24/32 m
- 237 206 000  
Rampe/Boom 32/50 m
- 237 226 000  
Rampe/Boom 24/32 m
- 237 227 000  
Rampe/Boom 32/50 m
- 238 837 000  
Rampe/Boom 24/32 m
- 238 788 000  
Rampe/Boom 32/50 m
- 237 220 000  
Rampe/Boom 24/32 m
- 237 221 000  
Rampe/Boom 32/50 m

- Rep 1 Ref 237 226 000 Joint torique/O-ring
- Rep 2 Ref 238 789 000
- Rep 3 Ref 237 220 000
- Rep 4 Ref 238 790 000
- Rep 5 Ref 237 227 000 Joint torique/O-ring

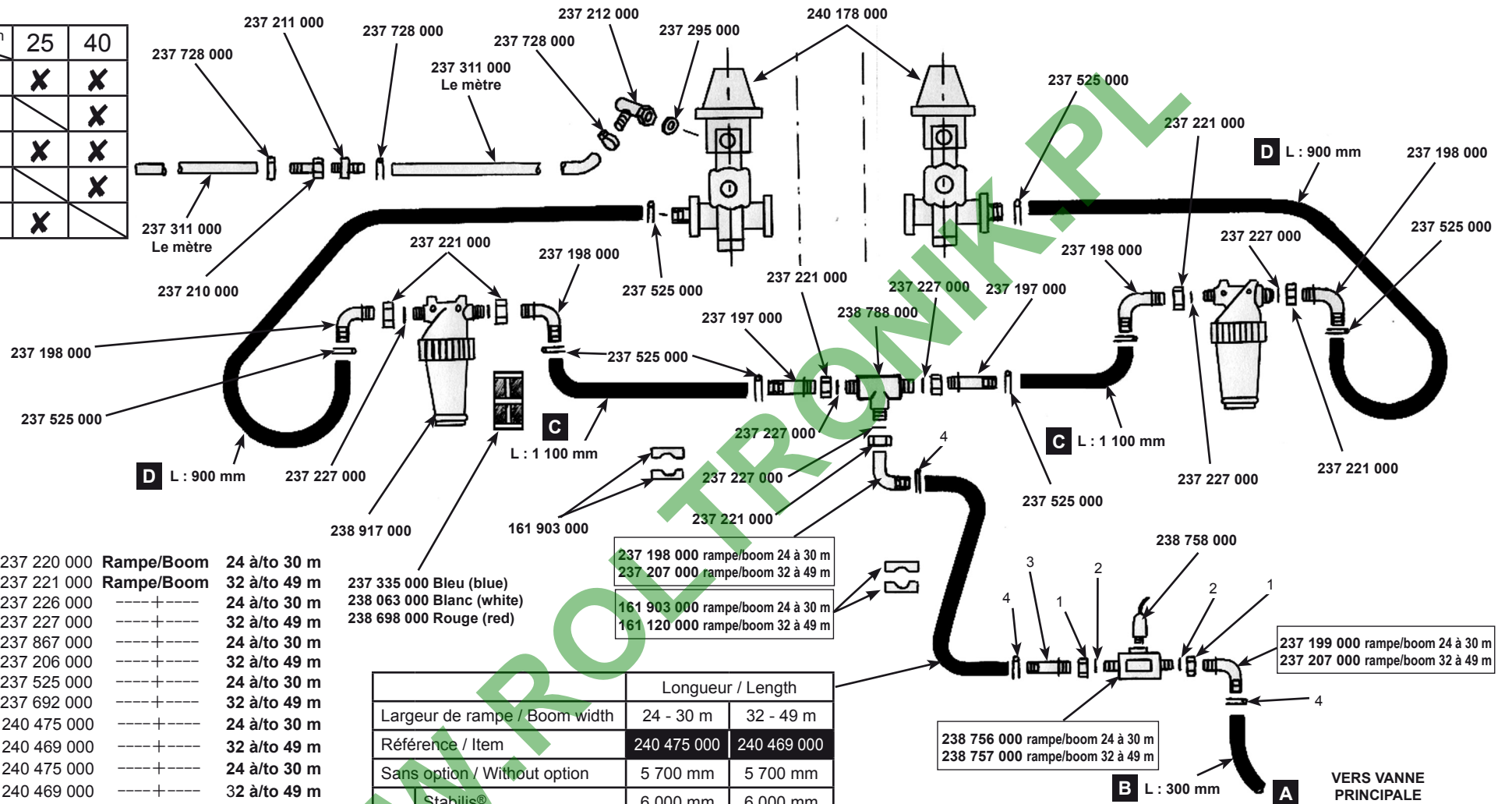




Modèles \ Km/h	25	40
17/39	X	X
17/40		X
21/39	X	X
21/40		X
23/45	X	



Modèles	25	40
17/39	X	X
17/40		X
21/39	X	X
21/40		X
23/45	X	



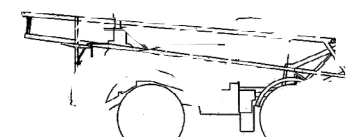
Rep	Ref	Rampe/Boom	24 à/to 30 m	32 à/to 49 m
Rep 1	Ref 237 220 000	Rampe/Boom	24 à/to 30 m	32 à/to 49 m
Rep 1	Ref 237 221 000	Rampe/Boom	32 à/to 49 m	32 à/to 49 m
Rep 2	Ref 237 226 000	----+----	24 à/to 30 m	32 à/to 49 m
Rep 2	Ref 237 227 000	----+----	32 à/to 49 m	32 à/to 49 m
Rep 3	Ref 237 867 000	----+----	24 à/to 30 m	32 à/to 49 m
Rep 3	Ref 237 206 000	----+----	32 à/to 49 m	32 à/to 49 m
Rep 4	Ref 237 525 000	----+----	24 à/to 30 m	32 à/to 49 m
Rep 4	Ref 237 692 000	----+----	32 à/to 49 m	32 à/to 49 m
Rep B	Ref 240 475 000	----+----	24 à/to 30 m	32 à/to 49 m
Rep B	Ref 240 469 000	----+----	32 à/to 49 m	32 à/to 49 m
Rep C	Ref 240 475 000	----+----	24 à/to 30 m	32 à/to 49 m
Rep C	Ref 240 469 000	----+----	32 à/to 49 m	32 à/to 49 m
Rep D	Ref 240 475 000	----+----	24 à/to 30 m	32 à/to 49 m
Rep D	Ref 240 469 000	----+----	32 à/to 49 m	32 à/to 49 m

237 335 000 Bleu (blue)  
238 063 000 Blanc (white)  
238 698 000 Rouge (red)

237 198 000 rampe/boom 24 à 30 m  
237 207 000 rampe/boom 32 à 49 m  
161 903 000 rampe/boom 24 à 30 m  
161 120 000 rampe/boom 32 à 49 m

237 199 000 rampe/boom 24 à 30 m  
237 207 000 rampe/boom 32 à 49 m  
238 756 000 rampe/boom 24 à 30 m  
238 757 000 rampe/boom 32 à 49 m

	Longueur / Length	
Largeur de rampe / Boom width	24 - 30 m	32 - 49 m
Référence / Item	240 475 000	240 469 000
Sans option / Without option	5 700 mm	5 700 mm
Option		
Stabilis®	6 000 mm	6 000 mm
Jets arrières Rear sprays	4 300 mm + 1 300 mm	4 300 mm + 1 300 mm
Stabilis® + jets arrières Stabilis® + rear sprays	4 300 mm + 1 530 mm	4 300 mm + 1 530 mm
Pompe vidange de cuve principale Emptying main tank pump	4 300 mm +	4 300 mm +
	1 300 mm	1 300 mm
Pompe vidange de cuve principale + Stabilis® Emptying main tank pump + Stabilis®	4 300 mm +	4 300 mm +
	1 530 mm	1 530 mm



VERS VANNE  
PRINCIPALE  
Chapitre 9  
Planche A03

ALIMENTATION RAMPE BOOM SUPPLY		9 G01 07/06/05
-----------------------------------	--	----------------------