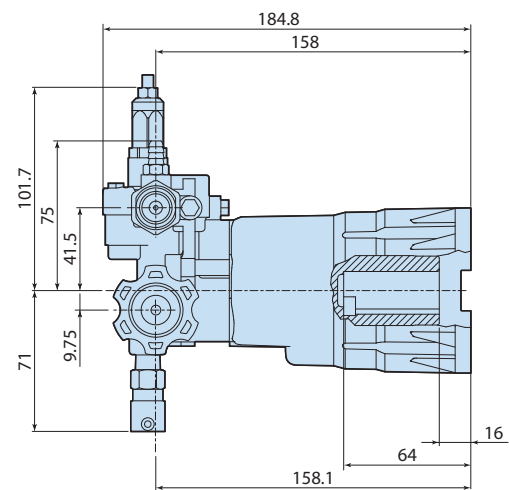
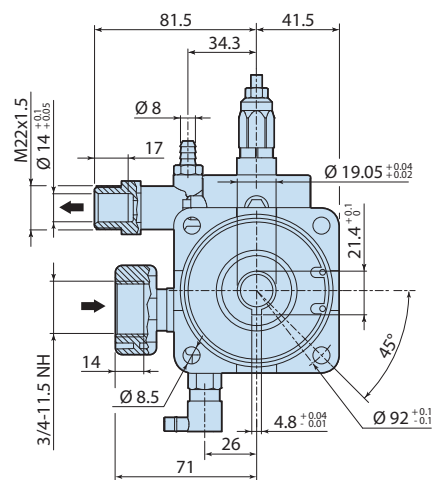


Description

3-piston alternating volumetric pumps for use on cleaning units. Can be directly coupled to various types of motors. Pump body in die-cast aluminium alloy. Pistons driven by swash plate mechanism. Two bearing systems, to support the pump shaft and pistons. Pistons in hardened and tempered steel. Pump head in pressed brass. Double gasket sealing system. Intake valves fitted above the pistons for greater efficiency. Integral regulating valve. Detergent suction system. Different delivery connections available.



Details	Value
Category	Cleaning wobble plate
Series	372 - RQV, RQW
Pump type	RQV 2.5 G30 D
Versioning	D
ARCode	25024
Output (lt/min)	9.5
Output (gpm)	2.5
Pressure (bar)	205
Pressure (psi)	3000
Power (hp)	5.5
Power (kw)	4
RPM	3400
Weight (kg)	3,5



3728500