

Description

3-piston alternating volumetric pumps for use on cleaning units and industrial systems.

Pump body and cover in die-cast aluminium alloy.

Side cover may be blind or incorporate oil sight glass.

Rear cover with oil drain outlet.

Pistons driven by crank-connecting rod mechanism.

Pump shaft in pressed high-strength steel.

Oversized friction bearings.

Bronze connecting rods.

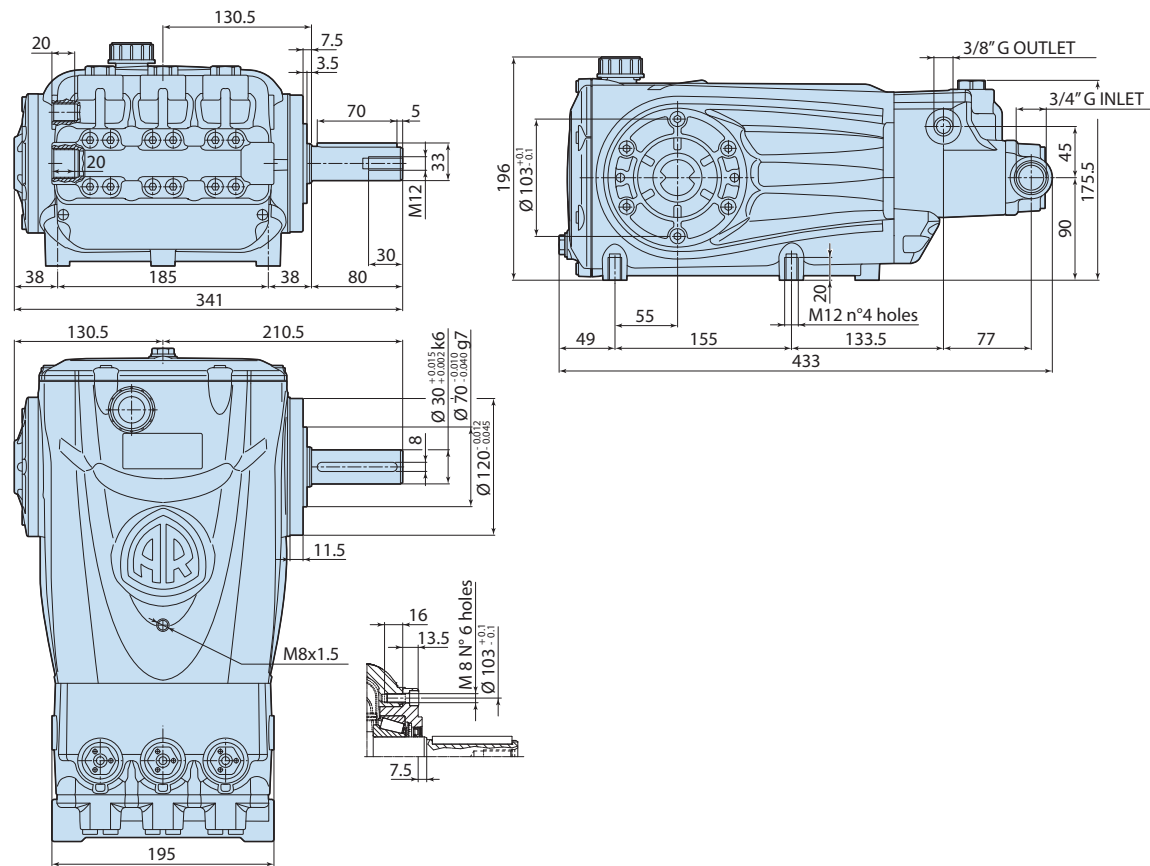
One-piece ceramic pistons.

Pump head in nichel - plated brass.

Double gasket sealing system. Intake and delivery valves have plugs for easier maintenance.



Details	Value
Category	Contractor 600
Series	366
Pump type	RTX 30.500
Versioning	N
ARCode	26116
Output (lt/min)	30
Output (gpm)	7,92
Pressure (bar)	500
Pressure (psi)	7250
Power (hp)	40
Power (kw)	30
RPM	1450
Weight (kg)	34



3668506