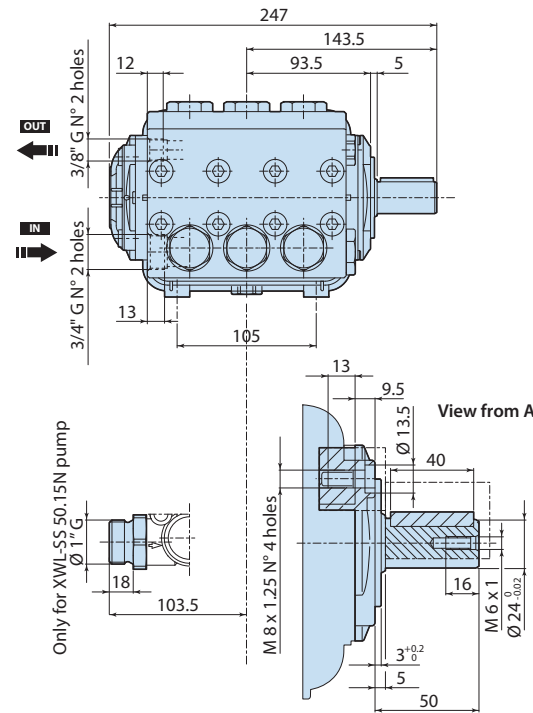
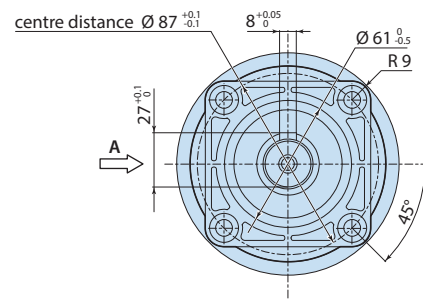
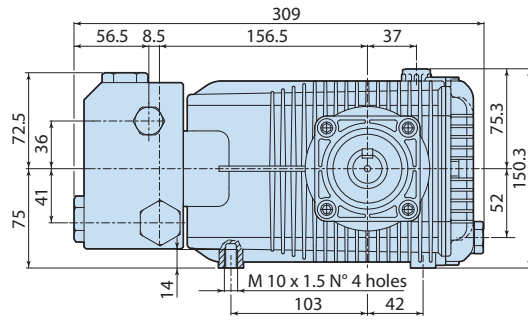


## Description

3-piston reciprocating pumps for use on cleaning units and industrial systems requiring a higher level of protection against corrosion and oxidation." Pump body, end plate and side covers in die-cast aluminium with protective electro-phoresis coating. Head machined from solid AISI 316L steel block for resistance to saline and acid environments. Pistons driven by crank-connecting rod mechanism. Connecting rods in die-cast special low-friction zinc-aluminium alloy. Double gasket sealing system to minimise any water leaks. Shaft in heat-treated pressed steel for excellent mechanical strength. Oversized friction bearings. One-piece ceramic pistons.



Details	Value
Category	Stainless Steel
Series	252 XWL-SS
Pump type	XWL-SS 33.06 N
Versioning	N
ARCode	22831
Output (lt/min)	33
Output (gpm)	8.72
Pressure (bar)	60
Pressure (psi)	900
Power (hp)	5,5
Power (kw)	4
RPM	950
Weight (kg)	18



2528500