

Description

3-piston alternating volumetric pumps for use on cleaning units and industrial systems.

Pump body and cover in die-cast aluminium alloy.

Side cover may be blind or incorporate oil sight glass.

Rear cover with oil drain outlet.

Pistons driven by crank-connecting rod mechanism.

Pump shaft in pressed high-strength steel.

Oversized friction bearings.

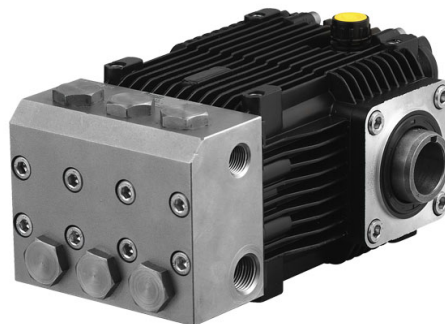
Connecting rods in die-cast special low-friction aluminium alloy.

One-piece ceramic pistons.

Pump head in stainless steel.

Double gasket sealing system.

Intake and delivery valves have plugs for easier maintenance.



Details	Value
Category	Stainless Steel
Series	234 - RK-SS, RKA-SS, HYD RK-SS
Pump type	RK-SS 15.15 C
Versioning	C
ARCode	20963
Output (lt/min)	15
Output (gpm)	3.96
Pressure (bar)	150
Pressure (psi)	2200
Power (hp)	5.5
Power (kw)	4
RPM	1450
Weight (kg)	10

