

Description

3-piston alternating volumetric pumps for use on cleaning units and industrial systems.

Can be coupled to various types of motors, directly or with flexible joint.

Pump body and cover in die-cast aluminium alloy.

Side cover may be blind or incorporate oil sight glass.

Rear cover with oil drain outlet.

Pistons driven by crank-connecting rod mechanism.

Pump shaft in pressed high-strength steel.

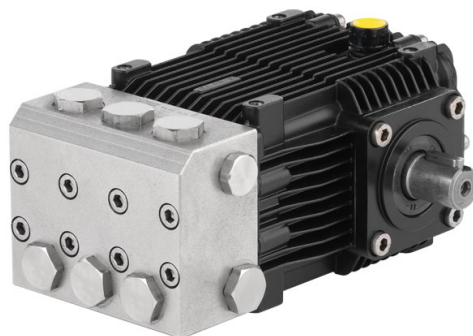
Oversized friction bearings.

Connecting rods in die-cast special low-friction zinc-aluminium alloy.

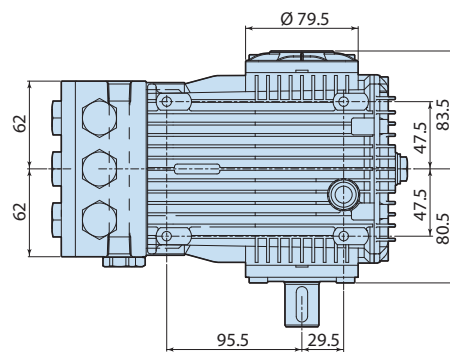
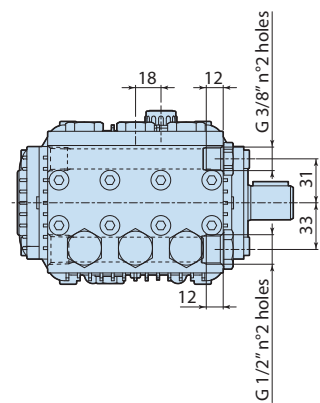
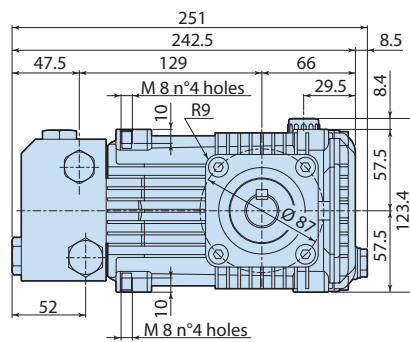
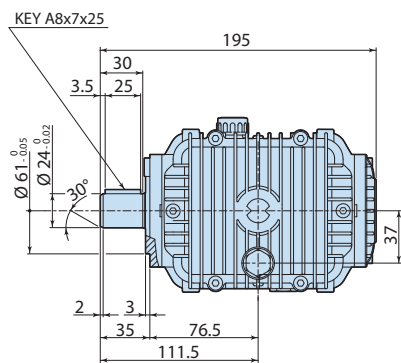
One-piece ceramic pistons.

Pump head in stainless steel.

Double gasket sealing system.



Details	Value
Category	Stainless Steel
Series	234
Pump type	RKA-SS 2.3 G15 N
Versioning	N
ARCode	20964
Output (lt/min)	8.7
Output (gpm)	2.3
Pressure (bar)	103
Pressure (psi)	1500
Power (hp)	2.4
Power (kw)	1,8
RPM	1750
Weight (kg)	10



2348500