

## Description

3-piston alternating volumetric pumps for use on cleaning units and industrial systems.

Flange for gasoline engine  $\varnothing 3/4"$  SAE J609a included.

Pump body in die-cast aluminium alloy. Side cover may be blind.

Pistons driven by crank-connecting rod mechanism.

Pump shaft in pressed high-strength steel.

Oversized friction bearings.

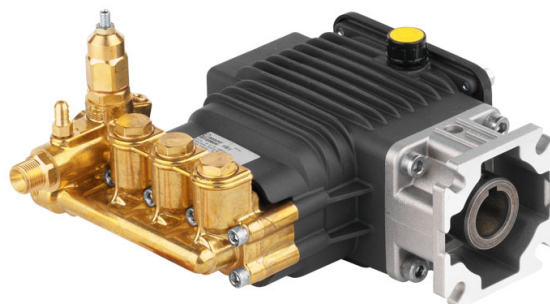
Connecting rods in die-cast special low-friction zinc-aluminium alloy.

Pump head in pressed brass.

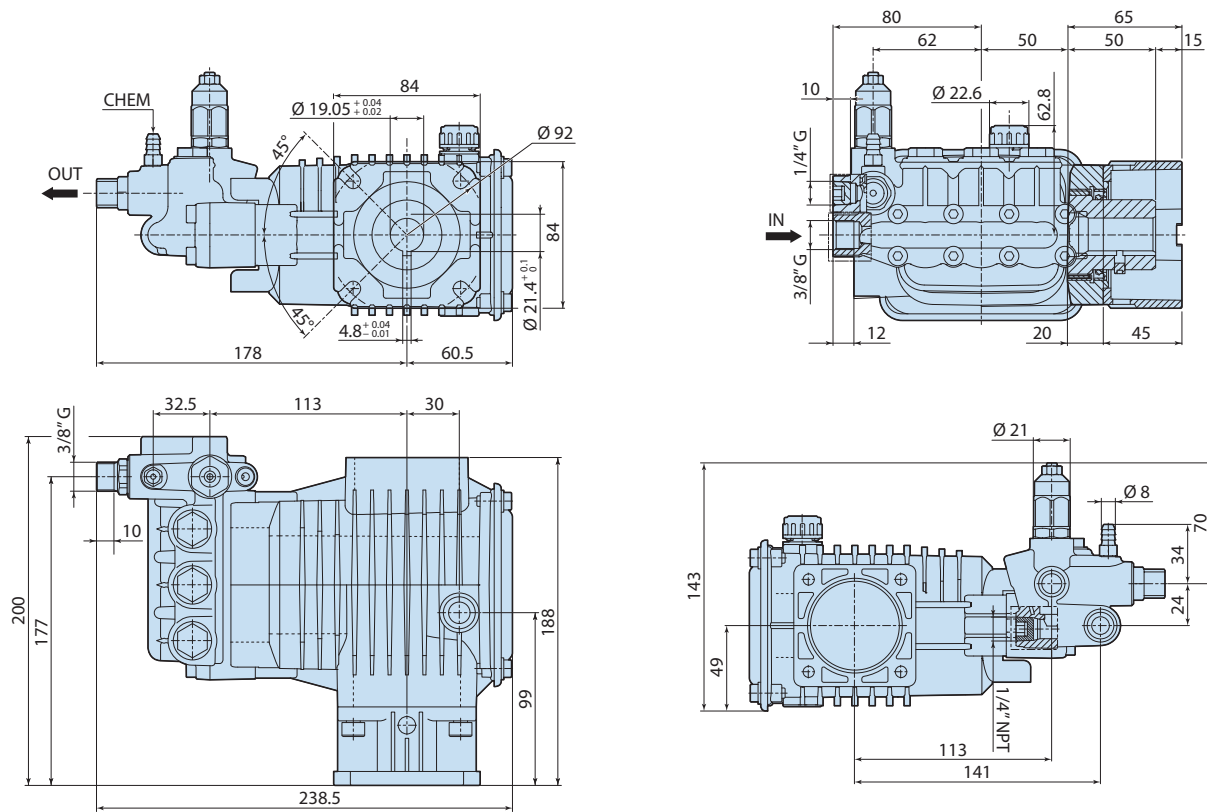
Double gasket sealing system.

Delivery valves have plugs for easier maintenance.

Regulator valves built-in to the pump head, with detergent injector.



Details	Value
Category	CLEANING
Series	276
Pump type	RSV 3G25 D+F25
Versioning	D
ARCode	23473
Output (lt/min)	11.4
Output (gpm)	3
Pressure (bar)	170
Pressure (psi)	2500
Power (hp)	5
Power (kw)	3.7
RPM	3400
Weight (kg)	7



2768501