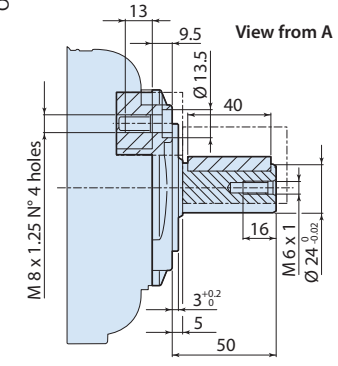
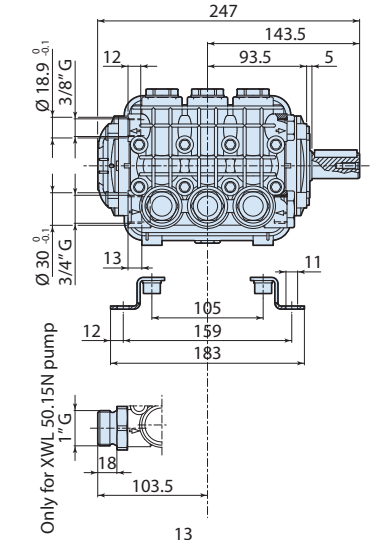
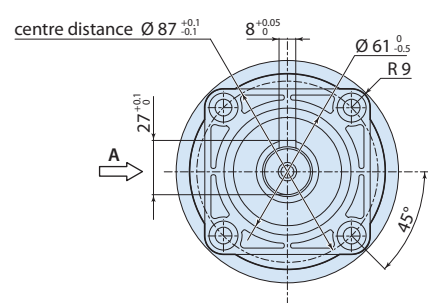
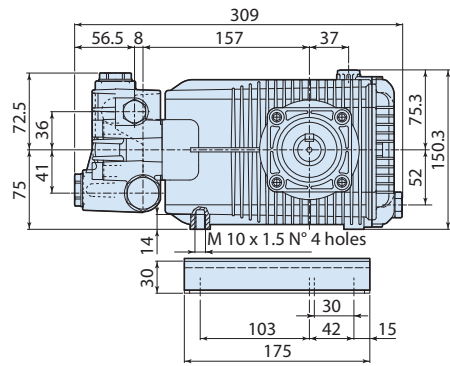


Description

3-piston reciprocating pumps for use on cleaning units and industrial systems operating with hot water. Pump body, end plate and side covers in die-cast aluminium with protective electro-phoresis coating. Pressed nickel-plated brass head for even greater protection and resistance in moderately aggressive atmospheres. Pistons driven by crank-connecting rod mechanism. Connecting rods in die-cast special low-friction zinc-aluminium alloy. Double PTFE gasket sealing system to minimise any water leaks. Shaft in heat-treated pressed steel for excellent mechanical strength. Oversized friction bearings. One-piece ceramic pistons.



Details	Value
Category	Hot Water 85°C
Series	194 - WHW, WHWL
Pump type	WHWL 38.15 N
Versioning	N
ARCode	23966
Output (lt/min)	38
Output (gpm)	9.81
Pressure (bar)	150
Pressure (psi)	2200
Power (hp)	15
Power (kw)	11
RPM	1450
Weight (kg)	16,5



1948501