

Description

3-piston alternating volumetric pumps for use on cleaning units and industrial systems.

Can be coupled to various types of motors, directly or with flexible joint. Flange F16 for electric motor B14 100 112 IEC34-7, 2P 50Hz included.

Pump body in die-cast aluminium alloy with oil drain outlet.

Rear cover in die-cast aluminium alloy.

Pistons driven by crank-connecting rod mechanism.

Pump shaft in pressed high-strength steel.

Oversized friction bearings.

Connecting rods in die-cast special low-friction zinc-aluminium alloy.

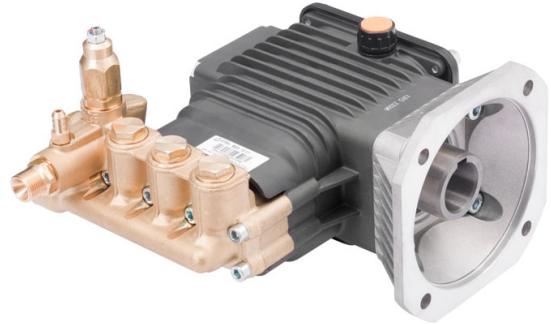
Pistons in ceramic-coated stainless steel .

Pump head in pressed brass.

Double gasket sealing system.

Intake and delivery valves have plugs for easier maintenance.

Integral regulating valve.



Details	Value
Category	Cleaning
Series	276 - RS, RSS, RSV
Pump type	RSS 11.14 C+F16
Versioning	C
ARCode	22606
Output (lt/min)	11
Output (gpm)	2.90
Pressure (bar)	140
Pressure (psi)	2000
Power (hp)	4
Power (kw)	3
RPM	2800
Weight (kg)	7

