

Description

3-piston alternating volumetric pumps for use on cleaning units and industrial systems.

Can be coupled to various types of motors, directly or with flexible joint.

Pump body and cover in die-cast aluminium alloy.

Side cover incorporate oil sight glass.

Rear cover with oil drain outlet. Oil level on body pump.

Pistons driven by crank-connecting rod mechanism.

Pump shaft in pressed high-strength steel.

Oversized friction bearings.

Connecting rods in die-cast special low-friction zinc-aluminium alloy.

One-piece ceramic pistons.

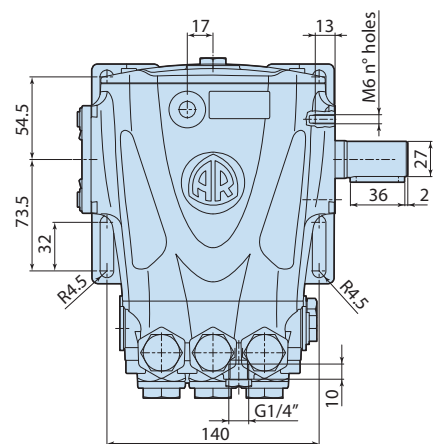
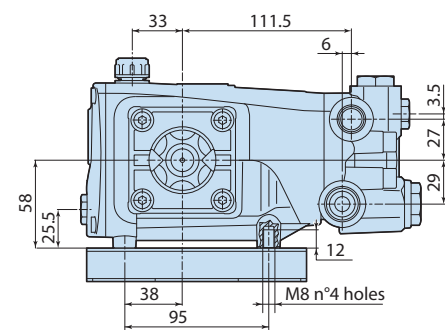
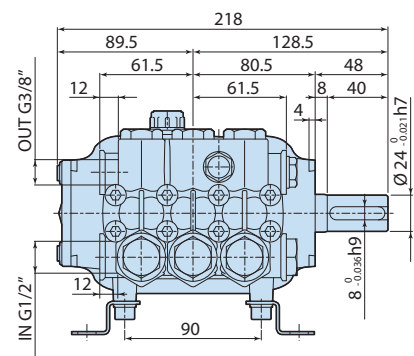
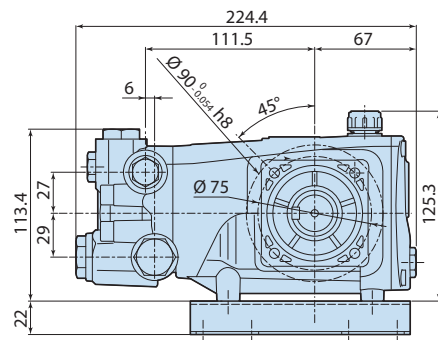
Pump head in pressed brass.

Double gasket sealing system.

Intake and delivery valves have plugs for easier maintenance.



Details	Value
Category	Cleaning
Series	322 - RR, RRA, RRV
Pump type	RRA 3.5 G25 N
Versioning	N
ARCode	23779
Output (lt/min)	13.2
Output (gpm)	3.5
Pressure (bar)	170
Pressure (psi)	2500
Power (hp)	6
Power (kw)	4,5
RPM	1750
Weight (kg)	7,6



3228500