

Description

3-piston alternating volumetric pumps for use on cleaning units and industrial systems.

Can be coupled to various types of motors, directly or with flexible joint.

Pump body and cover in die-cast aluminium alloy.

Side cover may be blind or incorporate oil sight glass.

Rear cover with oil drain outlet.

Pistons driven by crank-connecting rod mechanism.

Pump shaft in pressed high-strength steel.

Oversized friction bearings.

Connecting rods in die-cast special low-friction zinc-aluminium alloy.

Bronze connecting rods available.

One-piece ceramic pistons.

Pump head in pressed brass or steel.

Single or double gasket sealing system.

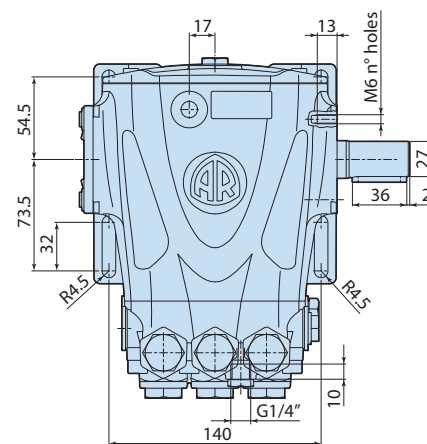
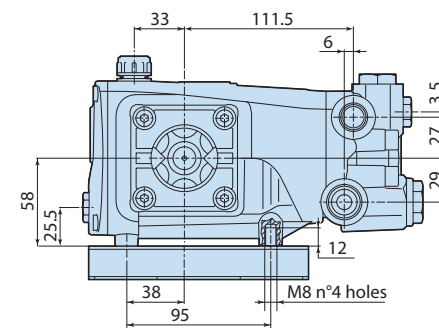
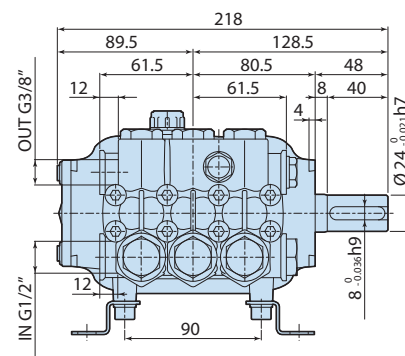
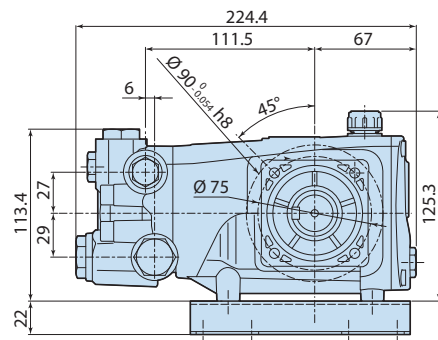
Various types of gasket system available depending on application.

Pump head internal components may be in different materials depending on application.

Intake and delivery valves have plugs for easier maintenance.



Details	Value
Category	Cleaning
Series	322 - RR, RRA, RRV
Pump type	RR 15.25 H N
Versioning	N
ARCode	24934
Output (lt/min)	15
Output (gpm)	3.96
Pressure (bar)	250
Pressure (psi)	3600
Power (hp)	10
Power (kw)	7,5
RPM	1450
Weight (kg)	8



3228500