



**ANNOVI  
REVERBERI**  
The Power of Experience

**ANNOVI REVERBERI S.p.A.**

Via M. L. King, 3 - 41122 Modena (Italy)  
Tel. (+39) 059.414.411 - Fax (+39) 059.253.505  
E - Mail: [industria@annovireverberi.it](mailto:industria@annovireverberi.it)

**Pump type  
Type de pompe  
Pumpentyp  
Tipo de bomba  
Tipo pompa**

**HXW**



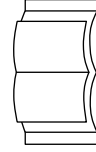
**TECHNICAL DATA / DONNÉES TECHNIQUES / TECHNISCHE ANGABEN  
CARACTERÍSTICAS TÉCNICAS / CARATTERISTICHE TECNICHE**

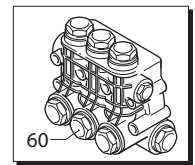
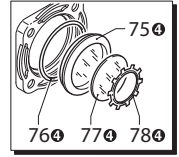
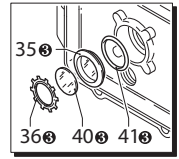
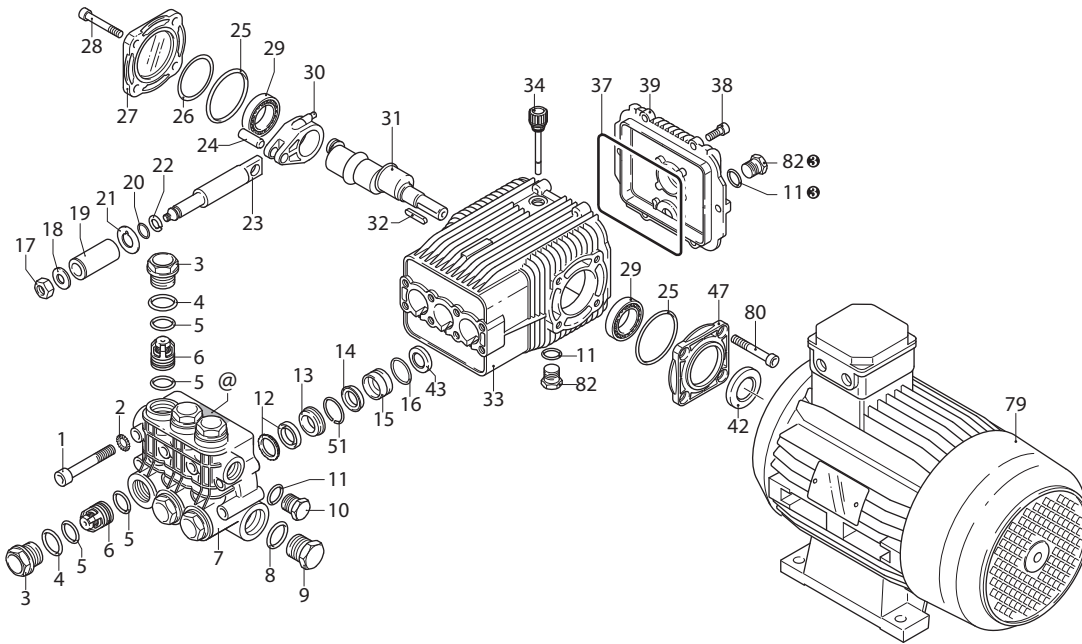
PUMP TYPE TYPE DE POMPE PUMPENTYP TIPO DE BOMBA TIPO POMPA	CAPACITY DEBIT LEISTUNG CAUDAL PORTATA		PRESSURE PRESSION DRUCK PRESION PRESSIONE		POWER PUISSANCE KRAFT POTENCIA POTENZA		RPM TOURS/1' U.P.M. REVOLUCIONES/1' N° GIRI/1'	WEIGHT POIDS GEWICHT PESO PESO
	l/min	gpm (US)	bar	psi	HP	kW		
HXW 15.15 ET	15	3.96	150	2200	5.5	4	1450	33
HXW 15.20 ET	15	3.96	200	2900	7.5	5.5	1450	39
HXW 21.20 ET	21	5.55	200	2900	10	7.5	1450	63
HXW 26.15 ET	26	6.87	150	2200	10	7.5	1450	63
HXW 30.10 ET	30	7.92	100	1450	7.5	5.5	1450	39
HXW 30.15 ET	30	7.92	150	2200	10	7.5	1450	63
HXW 30.20 ET	30	7.92	200	2900	15	11	1450	70



**ATTENTION:  
ATTENTION:  
ACHTUNG:  
ATENCIÓN:  
ATTENZIONE:**

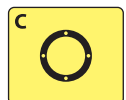
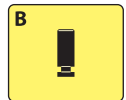
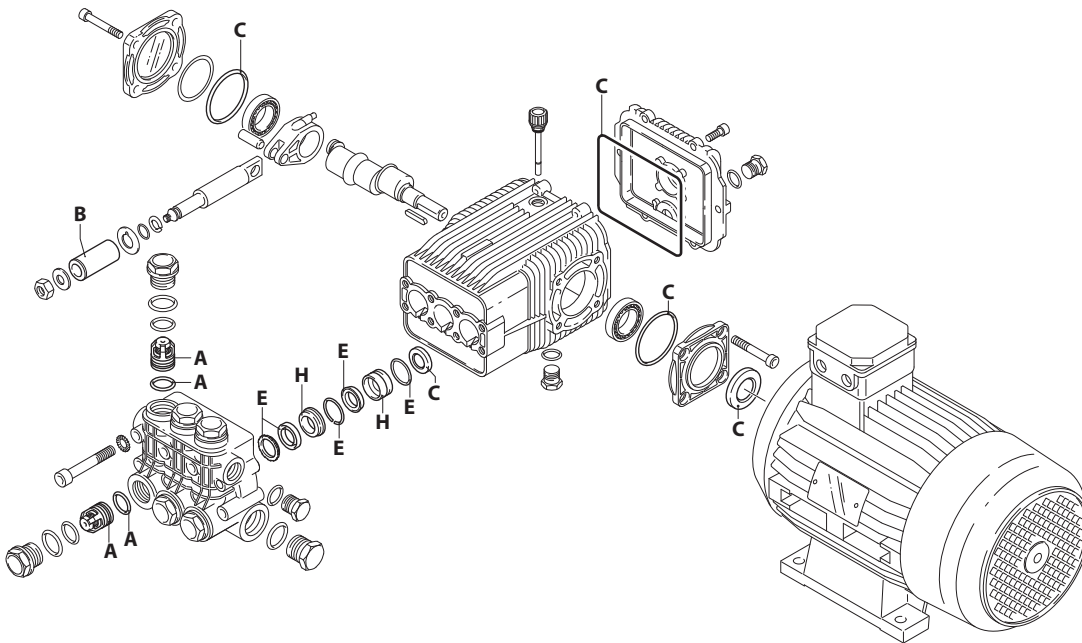
- This manual must be read before beginning installation of the unit.  
- Ce livret doit être lu avant d'installer et d'employer le produit.  
- Das vorliegende Handbuch ist vor der Installation und dem Gebrauch des Produkts aufmerksam zu lesen.  
- Este manual debe ser leído antes de proceder a la instalación y uso del producto.  
- Il presente libretto va letto prima di procedere all'installazione ed uso del prodotto.





UN002392-BQ

## KIT RICAMBI / PART KITS



UN002393-LU

# 194 Series

HXW ET 1450 rpm

15.15 ET (20871)  
15.20 ET (20872)  
21.20 ET (20224)

26.15 ET (20225)  
30.10 ET (20227)  
30.15 ET (20228)

30.20 ET (20229)



Pos.	Cod.	Denominazione	Description	Qt	Note	Pos.	Cod.	Denominazione	Description	Qt	Note		
1	1940260	Vite	TCEI M10x80	Screw	8	C=50Nm	31	1940520	Albero	marcato 5	Shaft	1	● □
2	650530	Rondella		Washer	8			1940180	Albero	marcato 3	Shaft	1	○
3	1940140	Tappo		Plug	6	C=68Nm		1940160	Albero	marcato 1	Shaft	1	☆ ▲ ▼ +
4	1940150	Anello antiestrusione	Ring	6		32	650250	Linguetta	Key	1			
5	1140450	Guarnizione OR	Ø 20,24x2,62	O-ring	12		33	1941330	Corpo pompa	Pump body	1		
6	1949050	Valvola completa	Complete valve	6		34	1140370	Tappo	Plug	1			
7	1940021	Testa	Head	1	● □ ○ ☆	35	1260250	Indicatore livello	Level gauge	1	③		
	1941210	Testa	Head	1	▲ ▼ +	36	1260430	Anello	Ring	1	③		
8	550350	Guarnizione OR	Ø 23,81X2,62	O-ring	1		37	1940410	Guarnizione OR	Ø 132x3	O-ring	1	
9	1140300	Tappo	3/4" G	Plug	1	C=35Nm	38	1200430	Vite	TCEI M6x16	Screw	6	C=10,4Nm
10	1980740	Tappo	3/8" G ottone	Plug	1	③ C=25Nm	39	1949010	Coperchio	completo	Cover	1	
11	740290	Guarnizione OR	Ø 14x1,78	O-ring	3	③	40	1780690	Disco	Plate	1	③	
12	1940440	Guarnizione	Ø 20	Gasket	3	● □ ○ ☆ (a)	41	1140450	Guarnizione OR	Ø 20,24x2,62	O-ring	1	③
	1940270	Guarnizione	Ø 22	Gasket	3	▲ ▼ + (a)	42	820680	Anello	tenuta	Ring	1	(b)
13	1940430	Guida pistone anteriore	Ø 20	Piston guide	3	● □ ○ ☆	43	1940560	Anello	tenuta	Ring	3	
	1940200	Guida pistone anteriore	Ø 22	Piston guide	3	▲ ▼ +	47	1941240	Supporto	Support	1		
14	1940470	Guarnizione	Ø 20	Gasket	3	● □ ○ ☆ (a)	51	1941220	Guarnizione	tagliato Ø22	Gasket	3	
	1940480	Guarnizione	Ø 22	Gasket	3	▲ ▼ + (a)	60	1949200	Premontaggio testa	Head assembly	1	● □ ○ ☆	
15	1940450	Guida pistone posteriore	Ø 20	Piston guide	3	● □ ○ ☆		1949203	Premontaggio testa	Head assembly	1	▲ ▼ +	
	1940460	Guida pistone posteriore	Ø 22	Piston guide	3	▲ ▼ +	75	1941270	Indicatore livello	Level gauge	1	④	
16	820490	Guarnizione OR	Ø 34,65x1,78	O-ring	3	③ C=12Nm	76	100410	Guarnizione OR	Ø 34,6x2,62	O-ring	1	④
17	1940570	Dado		Nut	3		77	1941260	Disco	Plate	1	④	
18	1940580	Rondella		Washer	3		78	1941290	Anello	Ring	1	④	
19	1420430	Pistone	Ø 20	Piston	3	● □ ○ ☆	79	4225	Motore	Gr.100	Motor	1	● 5,5HP
	1420120	Pistone	Ø 22	Piston	3	▲ ▼ +		4390	Motore	Gr.112	Motor	1	□ ▲ 7,5HP
20	880840	Guarnizione OR	Ø 9,25x1,78	O-ring	3			4391	Motore	Gr.132S	Motor	1	○ ☆ ▼ 10HP
21	960460	Disco		Plate	3			4392	Motore	Gr.132L	Motor	1	+ 15HP
22	1940120	Anello antiestrusione	Ring	3		80	620610	Vite	TCEI M8x30	Screw	1	□ ○ ▲	
23	1940070	Pistone di guida	Piston	3			680350	Vite	TCEI M8x35	Screw	1	☆ ▲ ▼ +	
24	1940060	Perno	Hub pin	3		82	1980740	Tappo	3/8" G ottone	Plug	2	③ C=20Nm	
25	1941380	Guarnizione OR	Ø 66,34x2,62	O-ring	2								
26	1941390	Spessore	0,05 mm	Shim 0.05 mm	1÷3								
	1941400	Spessore	0,10 mm	Shim 0.10 mm	1÷3								
	1941410	Spessore	0,19 mm	Shim 0.19 mm	1÷3								
	1941420	Spessore	0,25 mm	Shim 0.25 mm	1÷3								
27	1949011	Coperchio	Cover	1									
28	850370	Vite	TCEI M8x16	Screw	4	C=24,5Nm							
29	1941370	Cuscinetto	Bearing	2	● □								
	1140410	Cuscinetto	Bearing	2	○ ☆ ▲ ▼ +								
30	1940051	Biella	alluminio	Connecting-rod	3	③ C=24,5Nm							

③ Compreso nel cod. 1949010 / Part of part n° 1949010

④ Compreso nel cod. 1949011 / Part of part n° 1949011

## KIT RICAMBI - PART KITS

A=KIT 2780 valvole valves		B=KIT 2650 Ø 20 pistoni pistons		B=KIT 1891 Ø 22 pistoni pistons		C=KIT 2873 tenute olio oil seals	
Pos.	Q.ty	Pos.	Q.ty	Pos.	Q.ty	Pos.	Q.ty
5	6	19	3	19	3	25	2
6	6					37	1
						42	1
						43	3

E=KIT 2782 Ø 20 tenute acqua water seals		E=KIT 2783 Ø 22 tenute acqua water seals		H=KIT 2784 Ø 20 guida pistoni pistons guide		H=KIT 2785 Ø 22 guida pistoni pistons guide	
Pos.	Q.ty	Pos.	Q.ty	Pos.	Q.ty	Pos.	Q.ty
12	3	12	3	13	3	13	3
14	3	14	3	15	3	15	3
16	3	16	3				
51	3	51	3				

## SIMBOLOGIA - SYMBOLS

Ø 20	Ø 20	Ø 22	Ø 22
● Per / For HXW 15.15 cod. 20871	○ Per / For HXW 21.20 cod. 20224	▲ Per / For HXW 30.10 cod. 20227	+ Per / For HXW 30.20 cod. 20229
□ Per / For HXW 15.20 cod. 20872	☆ Per / For HXW 26.15 cod. 20225	▼ Per / For HXW 30.15 cod. 20228	

C Tolleranza coppia di serraggio +0÷-10% / Tightening torque tolerance +0÷-10%

⦿ Avvitare con Loxeal 55-14 / Screw with Loxeal 55-14

⦿ Lubrificare con grasso Molykote PG54 / Lubricate with grease Molykote PG54

(a) Montare con attrezzo speciale cod. 1940670 / Fit with special tool code nr. 1940670

(b) Montare anello tenuta con attrezzo cod. 1941990 / Fit the seal with tool code nr. 1941990

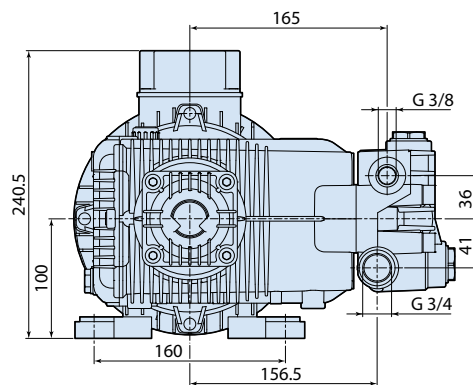
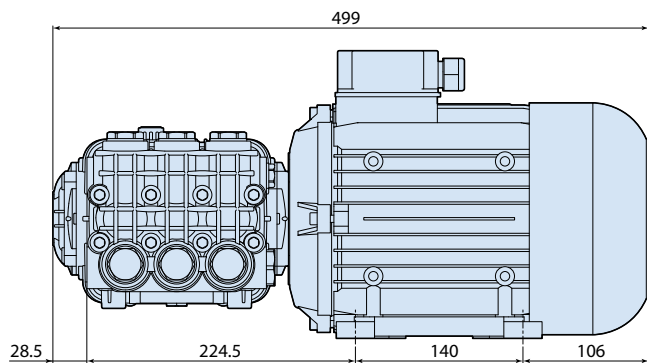
@ Posizionamento targa di identificazione / Identification plate positioning

### Olio - Oil

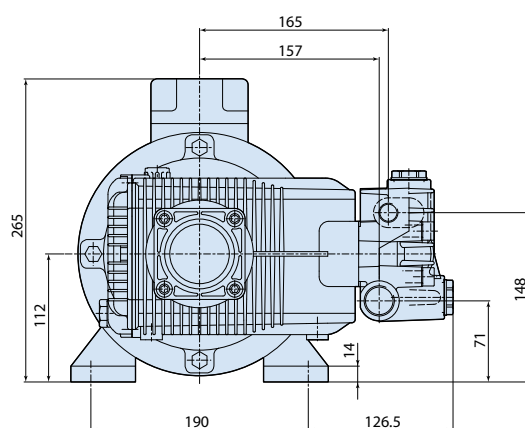
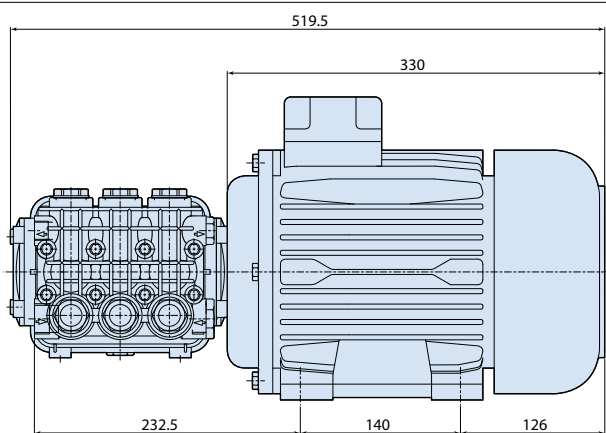
Tipo / Type	Quantità / Quantity
SAE 15W40	0,9 Kg

# DIMENSIONS / DIMENSIONS / ABMESSUNGEN / DIMENSIONES / DIMENSIONI

4225



4390



4391  
4392

